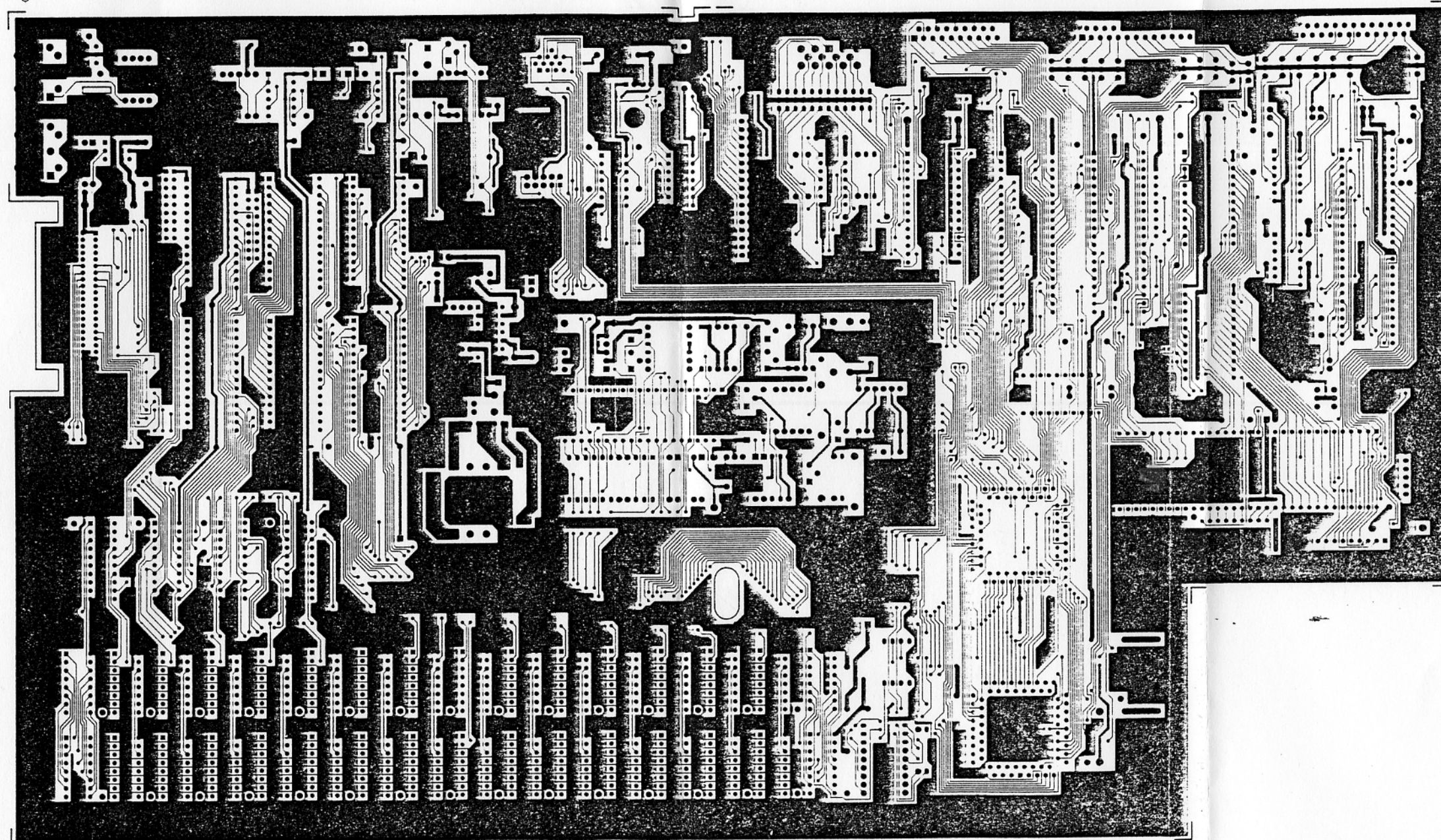

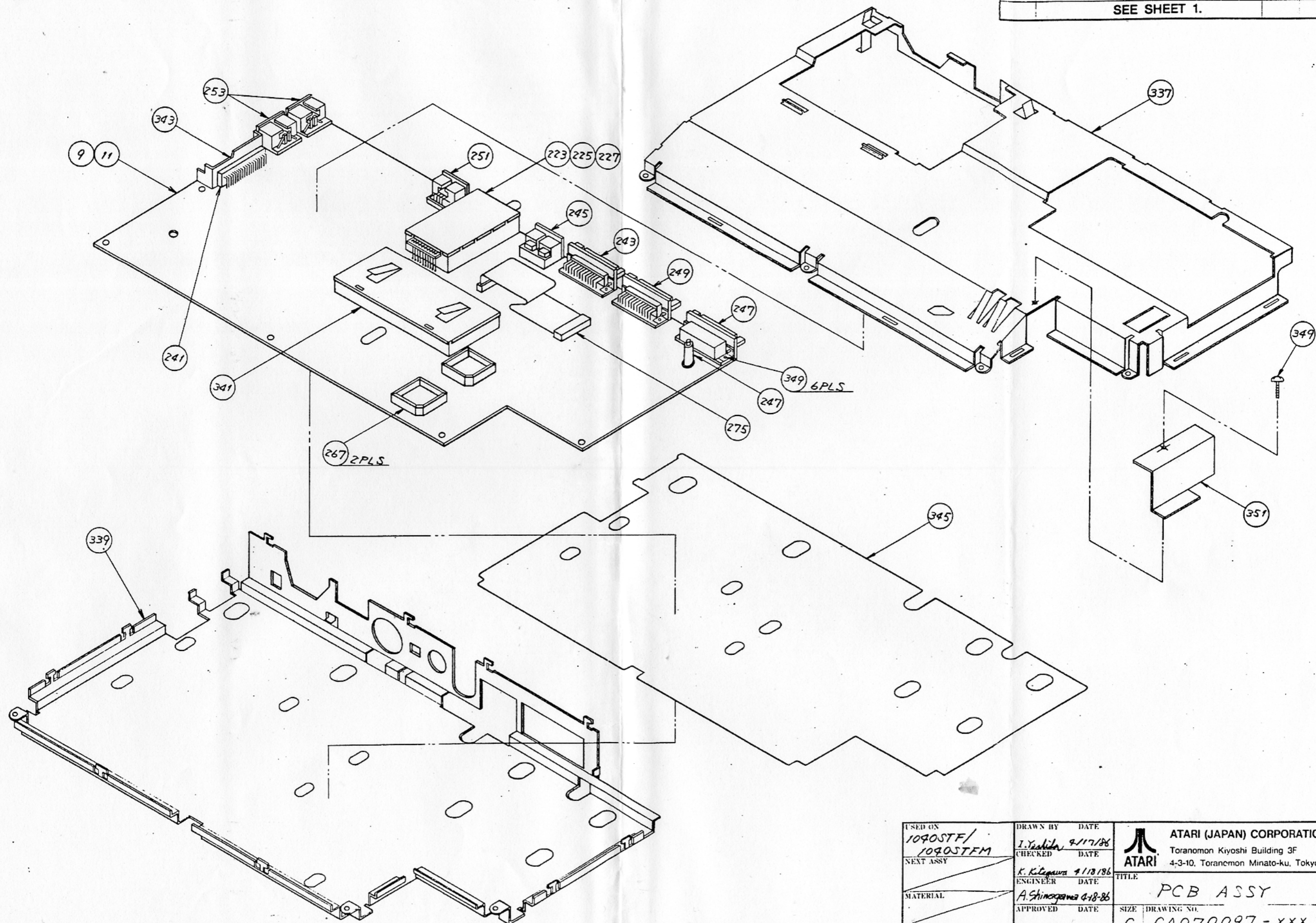


部品面 パターン 1040STF



COMPONENT SIDE

DESIGN	DRAWN BY <i>N. Tanaka</i>	DATE 12-4-85	 ATARI (JAPAN) CORPORATION Toranomon Kiyoshi Building 3F 4-3-10, Toranomon Minato-ku, Tokyo 105
TEST ASSY	CHECKED <i>K. Kitagawa</i>	DATE 12-5-85	
MATERIAL	ENGINEER <i>K. Maruyama</i>	DATE 12-5-85	
FINISH	APPROVED <i>[Signature]</i>	DATE 7/6/85	
TITLE P.C.B.			REV B
SIZE DRAWING NO. C 0070230			SCALE NONE SHEET 2 OF 5

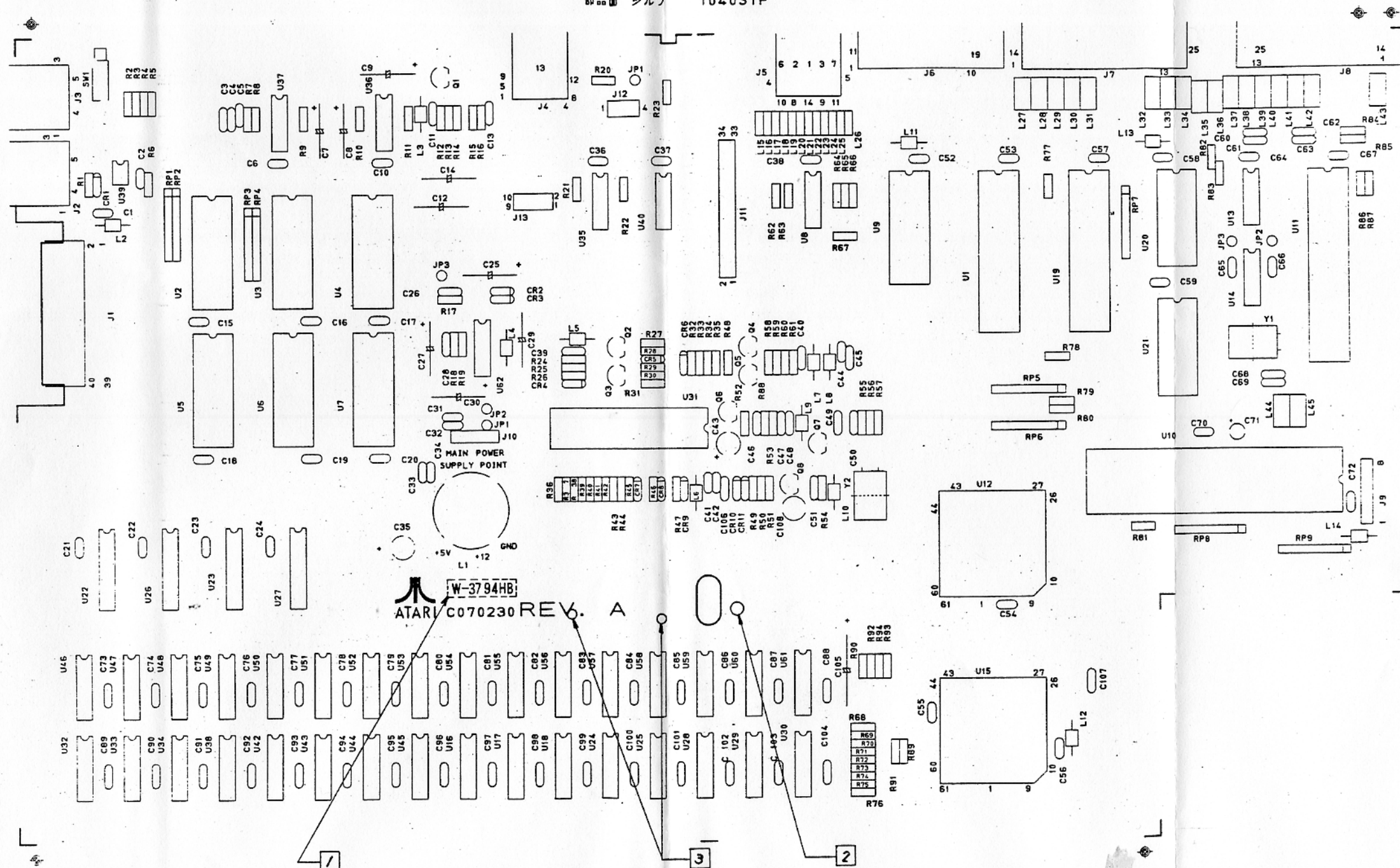


USED ON 1090STF/ 1090TFM	DRAWN BY I. Yashida 4/17/86	DATE 4/17/86	ATARI (JAPAN) CORPORATION Toranomon Kiyoshi Building 3F 4-3-10, Toranomon Minato-ku, Tokyo 105	
NEXT ASSY	CHECKED K. K. Ogawa 4/18/86	DATE 4/18/86	TITLE PCB ASSY	
MATERIAL	ENGINEER A. Shinogawa 4-18-86	DATE 4-18-86	SIZE C	DRAWING NO. CA070097-XXX
FINISH	APPROVED [Signature]	DATE 4/18/86	REV B	SCALE NONE
			SHEET 20 OF 20	

PART NO.	MATERIAL	MARKET
C070230-001	94 HB	U.S.A., FRANCE, GERMANY
-002	94V-1	ITALY, NETHERLANDS
-003	94V-0	
-004	94V-1, 94V-0	U.S.A., CANADA
C070230-005	94 HB	U.S.A.

REV	REVISIONS DESCRIPTION	DATE	APPROVED
A	PRODUCTION RELEASE	7/6/85	<i>[Signature]</i>
B	REVISED PER ECO NO. 00180	12-20-85	<i>[Signature]</i>

部品面 シルク 1040STF



W-3794HB
ATARI C070230 REV. A

SILK PRINT

3 USE FOR C070230-004,-005 NTSC (USA/CANADA) REV. A
(TO BE INSTALLED PIGGY BACK PCB)

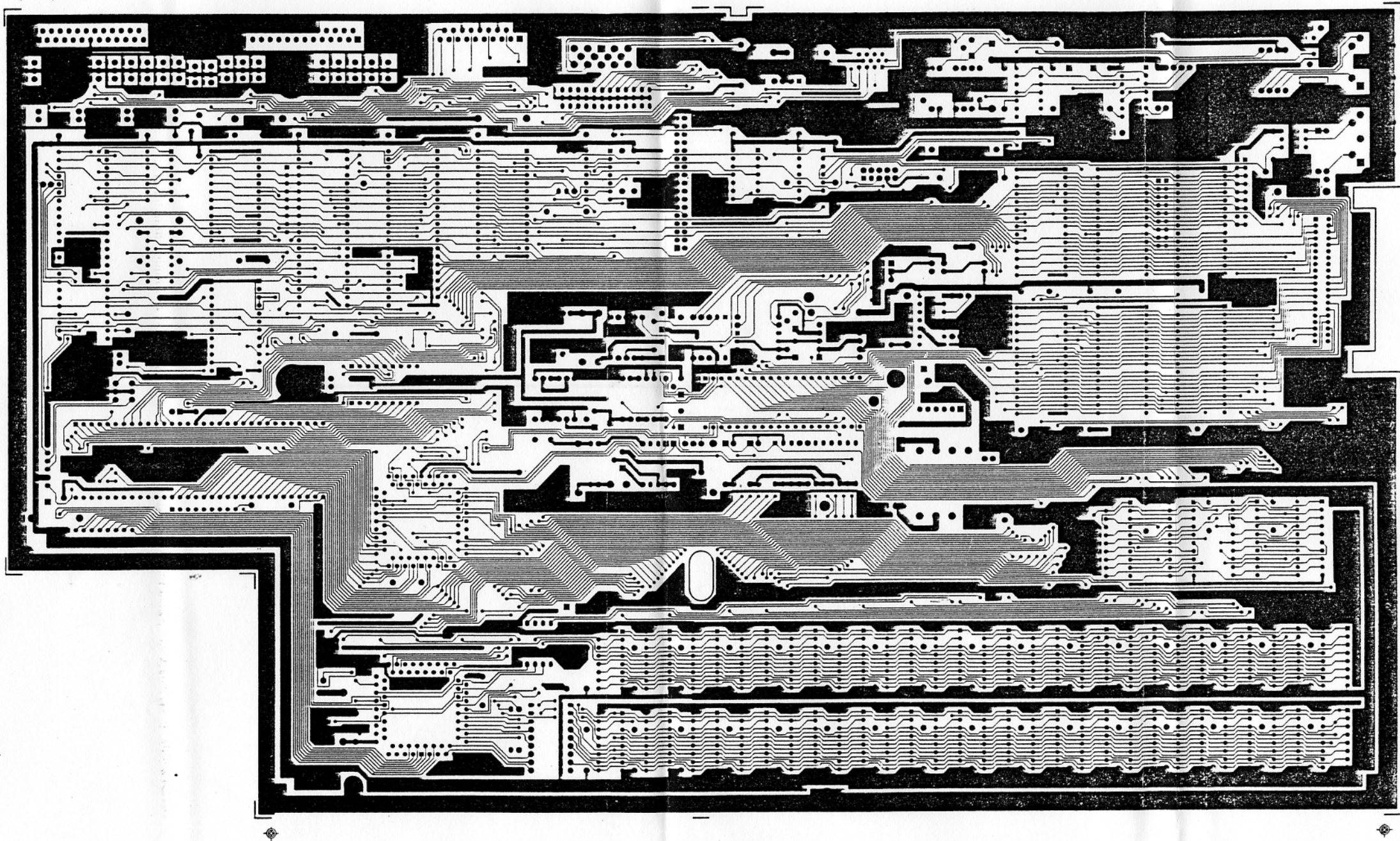
2 USE FOR C070230-004,-005 NTSC (USA/CANADA) REV. A
(TO BE INSERTED FOUR WIRES FROM PIGGY BACK PCB)

1 VARIES DEPENDING ON VENDOR APPROVAL NO.


NOTES - UNLESS OTHERWISE SPECIFIED:

USED ON 1040STF	DRAWN BY N. Katsura 12/85	DATE 12/85	ATARI (JAPAN) CORPORATION Toranomon-Ku, Shinjuku-Bldg 1F, 4F 4-3-10 Toranomon Minato-Ku, Tokyo 106
NEXT ASSY CA070076	CHECKED K. Katsura 12/85	DATE 12-5-85	
MATERIAL	ENGINEER K. Matsuda	DATE	
FINISH	APPROVED <i>[Signature]</i> 1/6/85	DATE	
TITLE P. C. B. SIZE DRAWING NO. C070230			REV B SHEET NONE

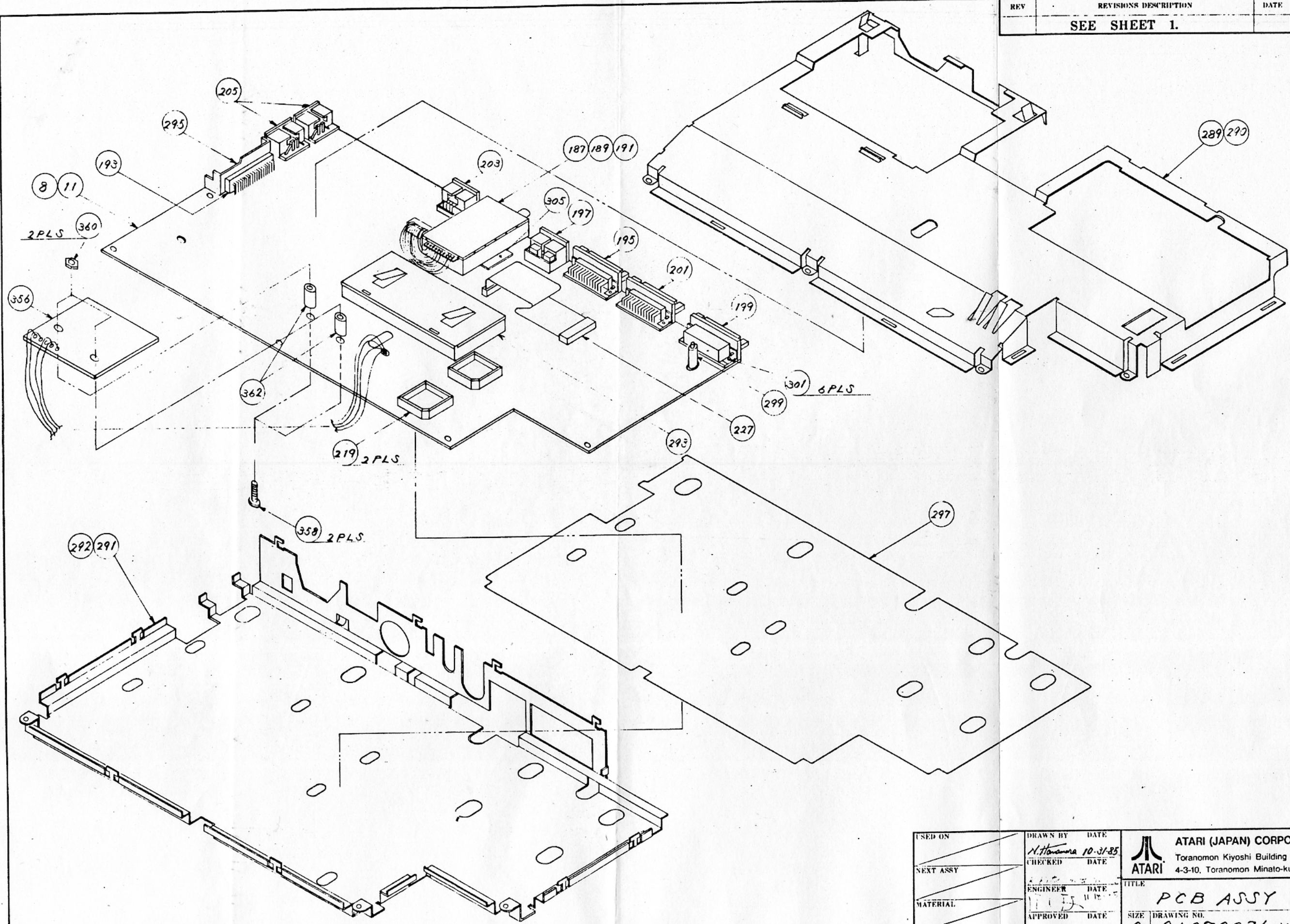
半田面パターン 1040STF



SOLDER SIDE

USED ON NEXT ASSY MATERIAL FINISH	DRAWN BY <i>N. Tanaka</i>	DATE 12-4-85	 ATARI (JAPAN) CORPORATION Toranomom Kiyoshi Building 3F 4-3-10, Toranomom Minato-ku, Tokyo 105	TITLE P. C. B.	REV B
	CHECKED <i>K. Kiyama</i>	DATE 12-5-85		SIZE C070230	
	ENGINEER <i>K. Mochizuki</i>	DATE 12-5-85		SCALE NONE	SHEET 3 OF 5
	APPROVED <i>[Signature]</i>	DATE 12/6/85			

REV	REVISIONS DESCRIPTION	DATE	APPROVED
	SEE SHEET 1.		



USED ON	DRAWN BY <i>N. Hironaka</i>	DATE 10-31-85	ATARI (JAPAN) CORPORATION Toranomon Kiyoshi Building 3F 4-3-10, Toranomon Minato-ku, Tokyo 105 ATARI	TITLE PCB ASSY		
NEXT ASSY	CHECKED	DATE		SIZE C	DRAWING NO. CA070076-XXX	REV E
MATERIAL	ENGINEER	DATE		SCALE NONE		
FINISH	APPROVED	DATE		SHEET 10 OF 10		

THIRD ANGLE SYSTEM DIMENSION: MM