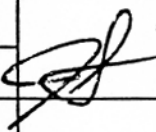
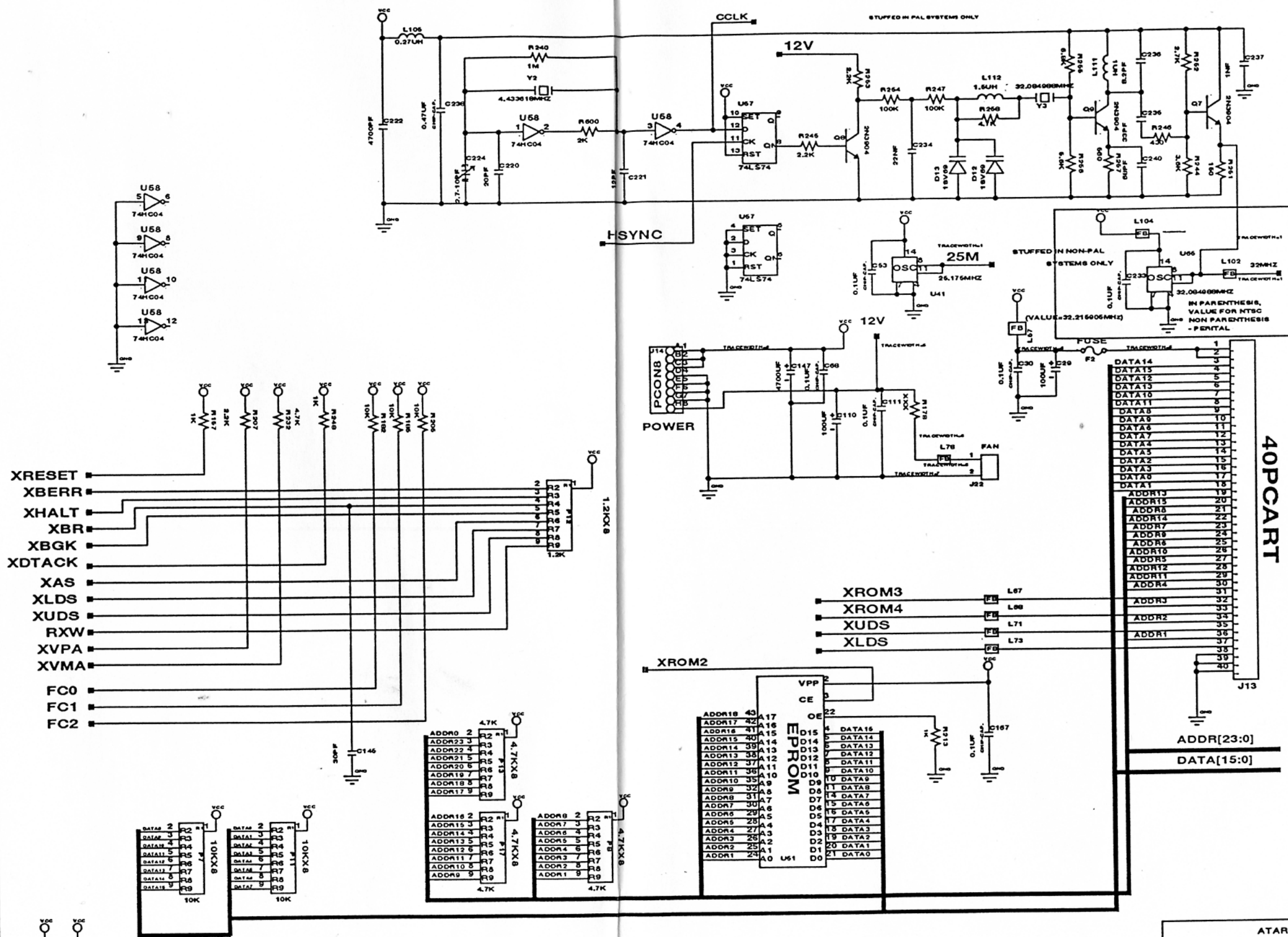
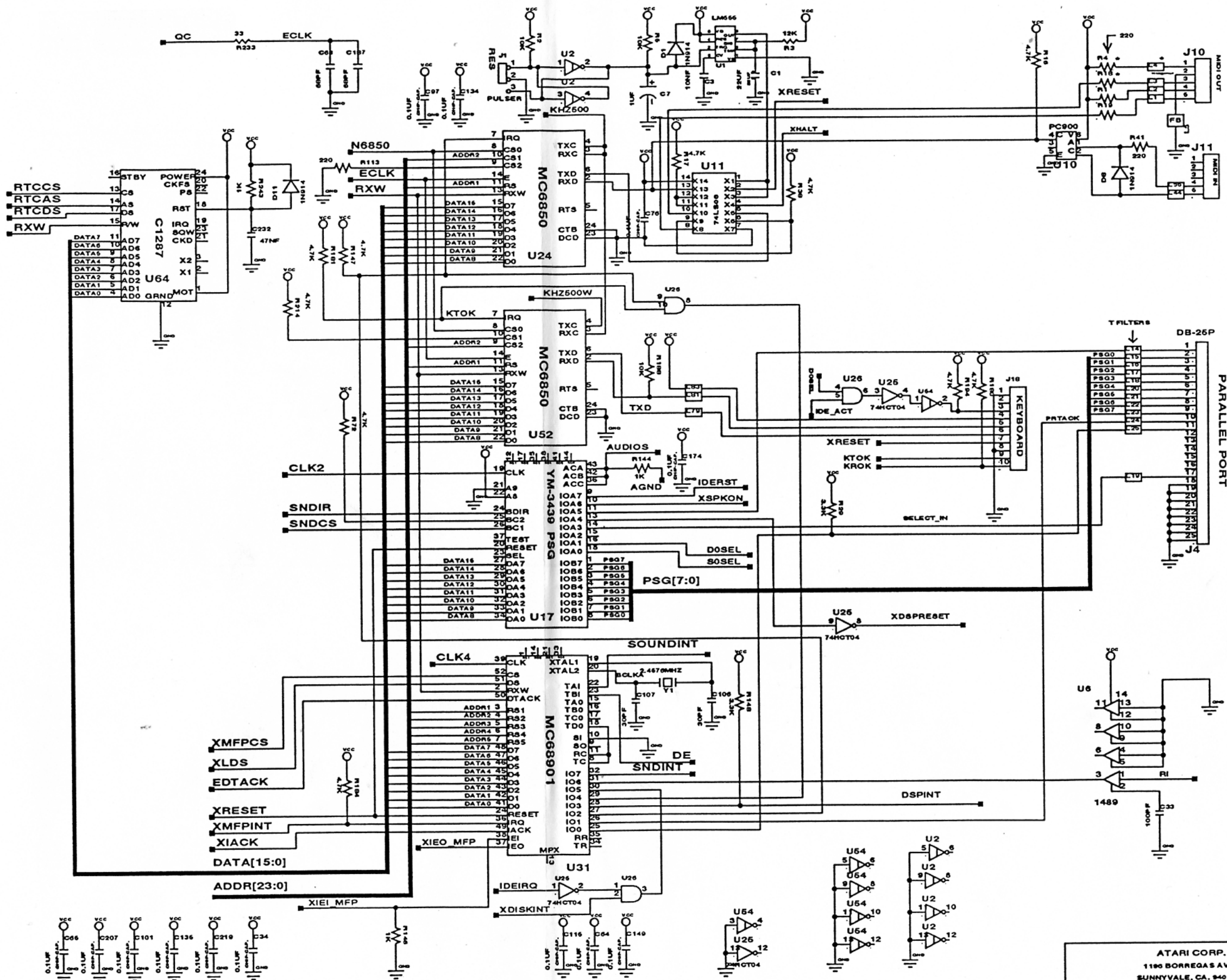


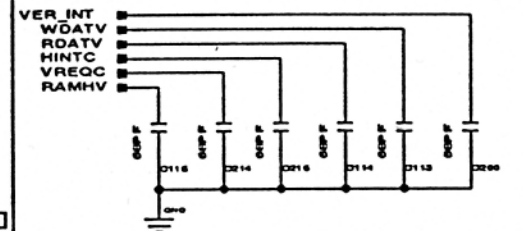
REV	REVISIONS DESCRIPTION	DATE	APPROVED
A	INITIAL RELEASE	7/23/92	
B	REVISED PER ECO #1488	8/25/92	
C	REVISED PER ECO #1492	8/25/92	
D	REVISED PER ECO #1497	8/25/92	
E	REVISED PER ECO #1498		
F	REVISED PER ECO #1505	9/10/92	
G	REVISED PER ECO #1600	1/6/93	

		DRAWN BY TRH	DATE	ATARI CORP. 1100 BORREGAS AVE. SUNNYVALE, CA. 94089			
		CHECKED JH	DATE 1-6-93				
CA401335-001		ENGINEER JH	DATE 1-6-93	TITLE FALCON 030 SCHEMATIC			
NEXT ASSEMBLY	USED ON ORIGINAL MODEL	APPROVED	DATE	SIZE D	CODE	NUMBER C303007-001	REV a
APPLICATION		APPROVED	DATE	SHEET 1 OF 14			



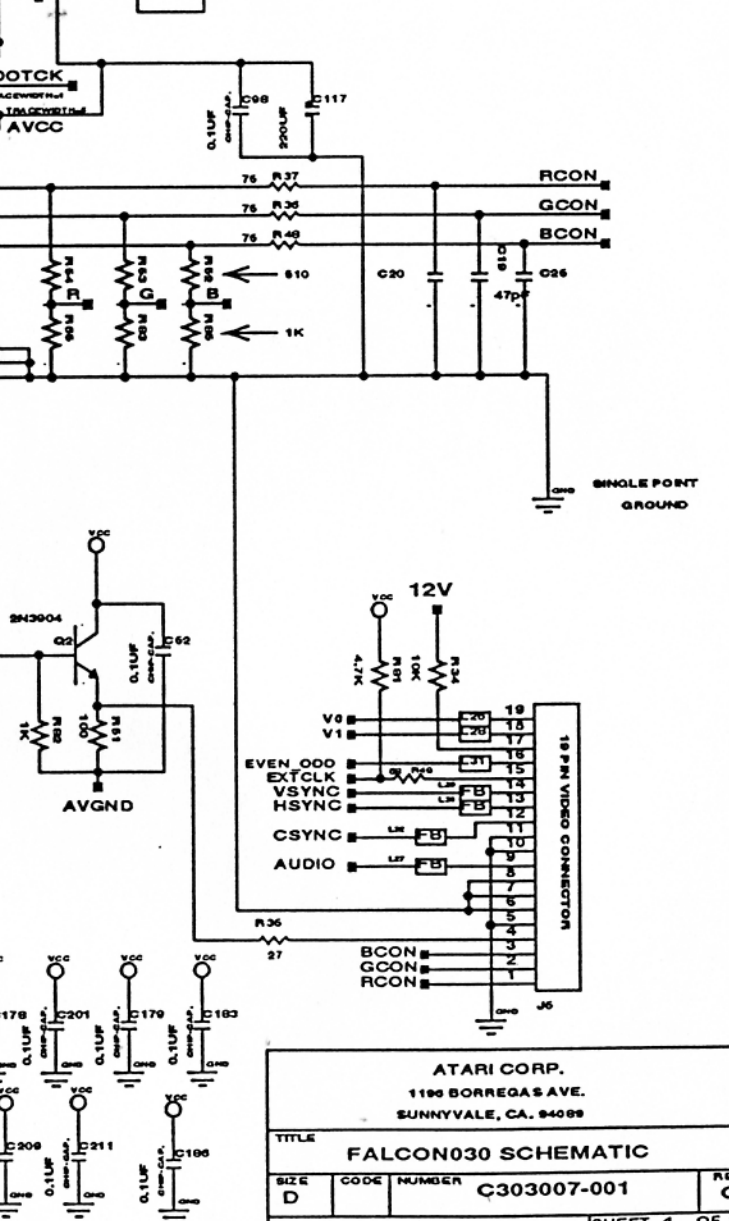
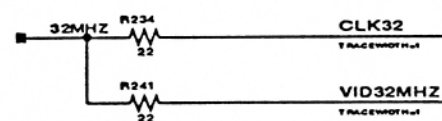
40PCART





FOR MODULATOR SYSTEMS ONLY

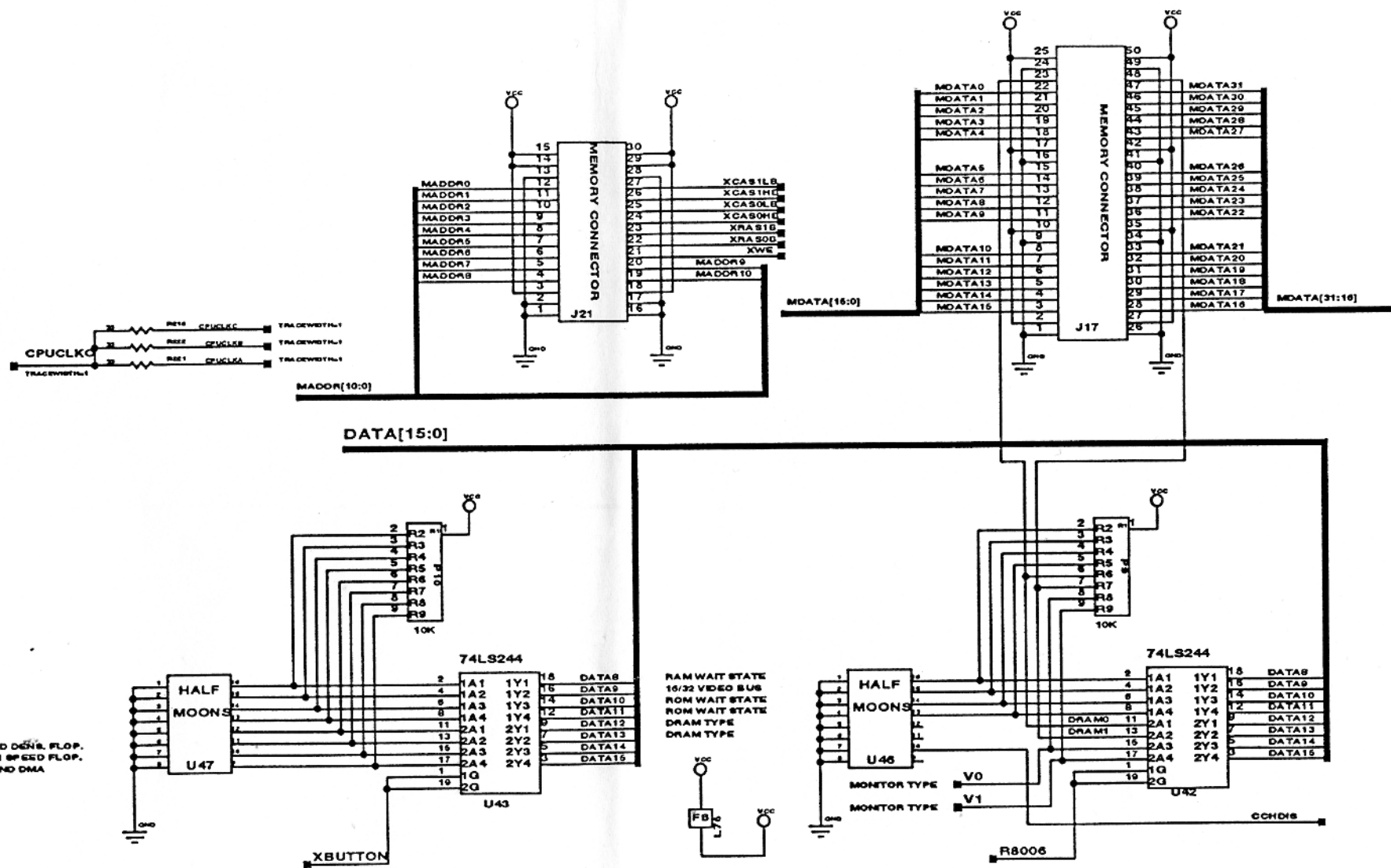
NOTE: JMP 2 ST MUST BE PLACED NEAR USE

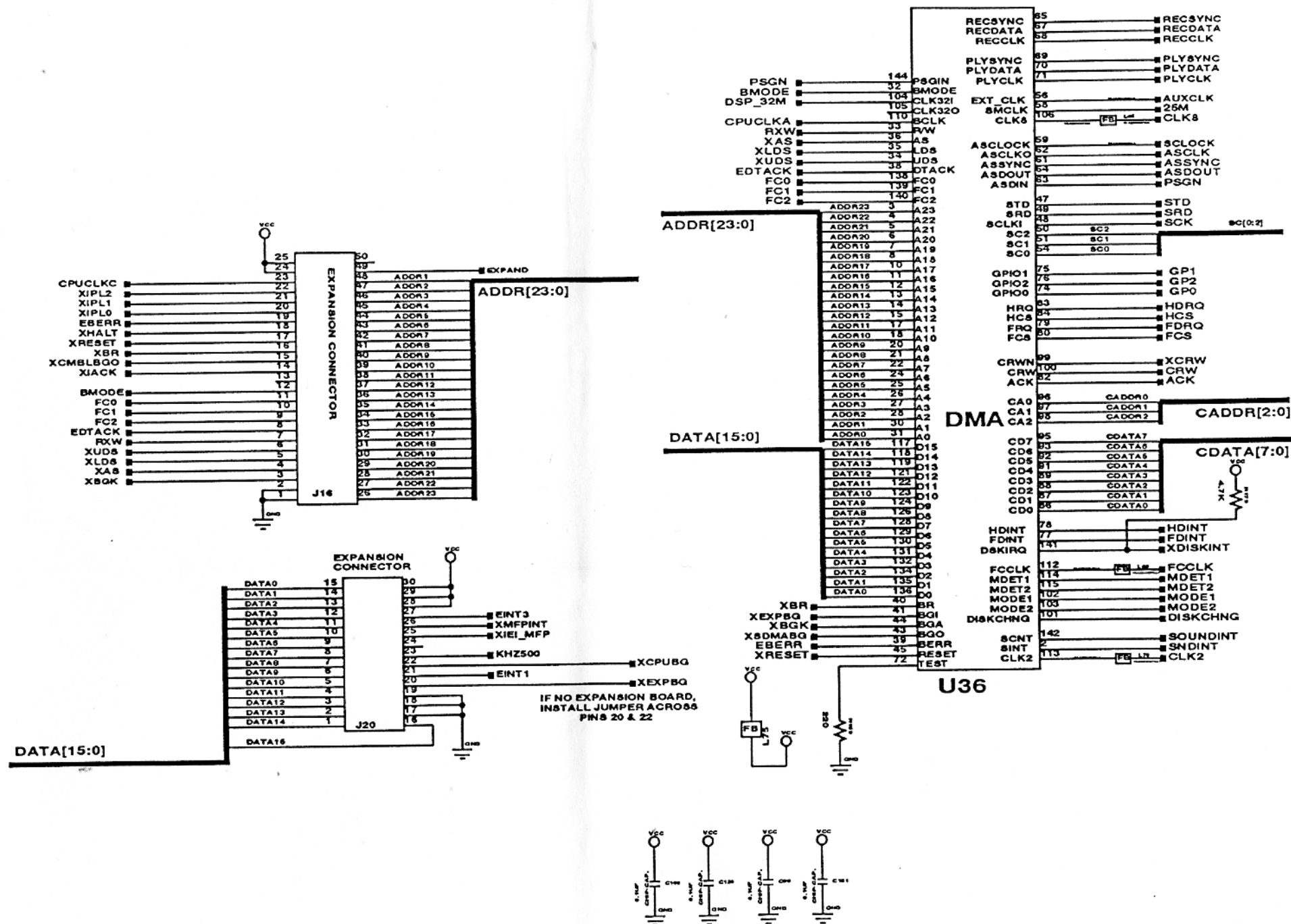


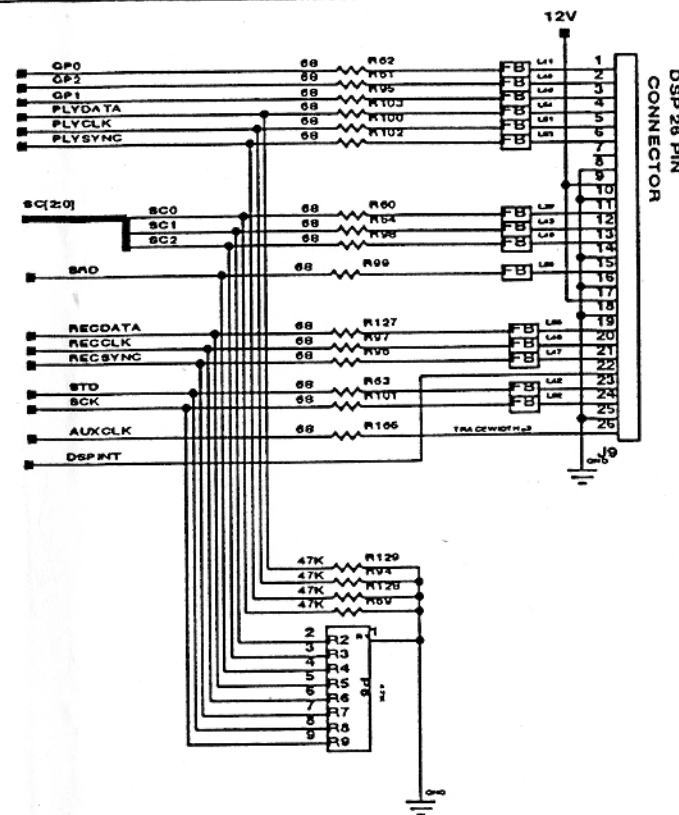
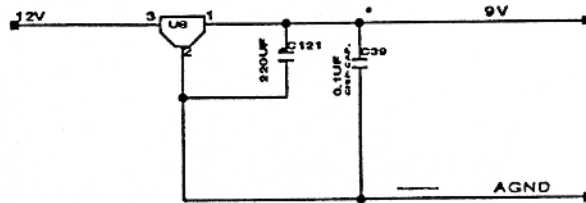
056

034

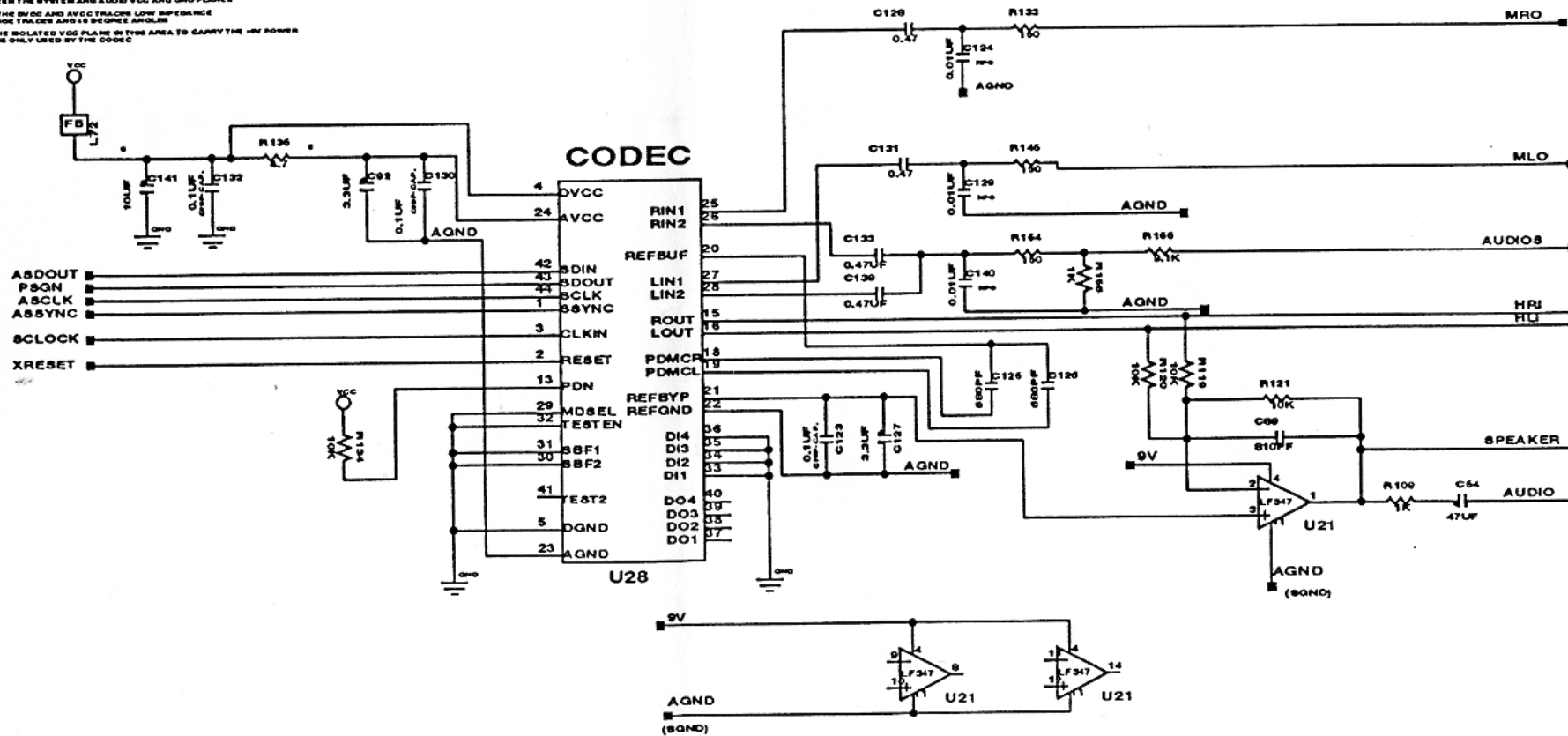
SHEET 4 OF 1

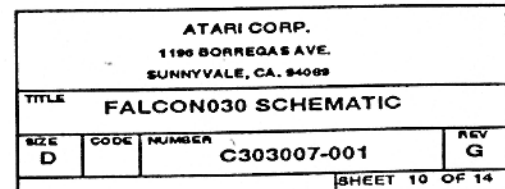


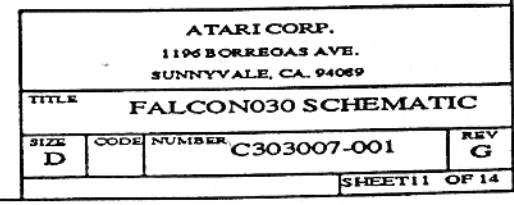


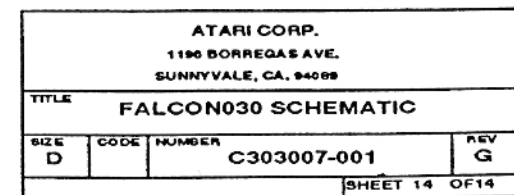


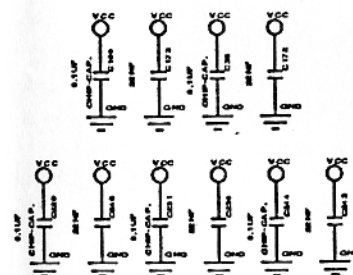
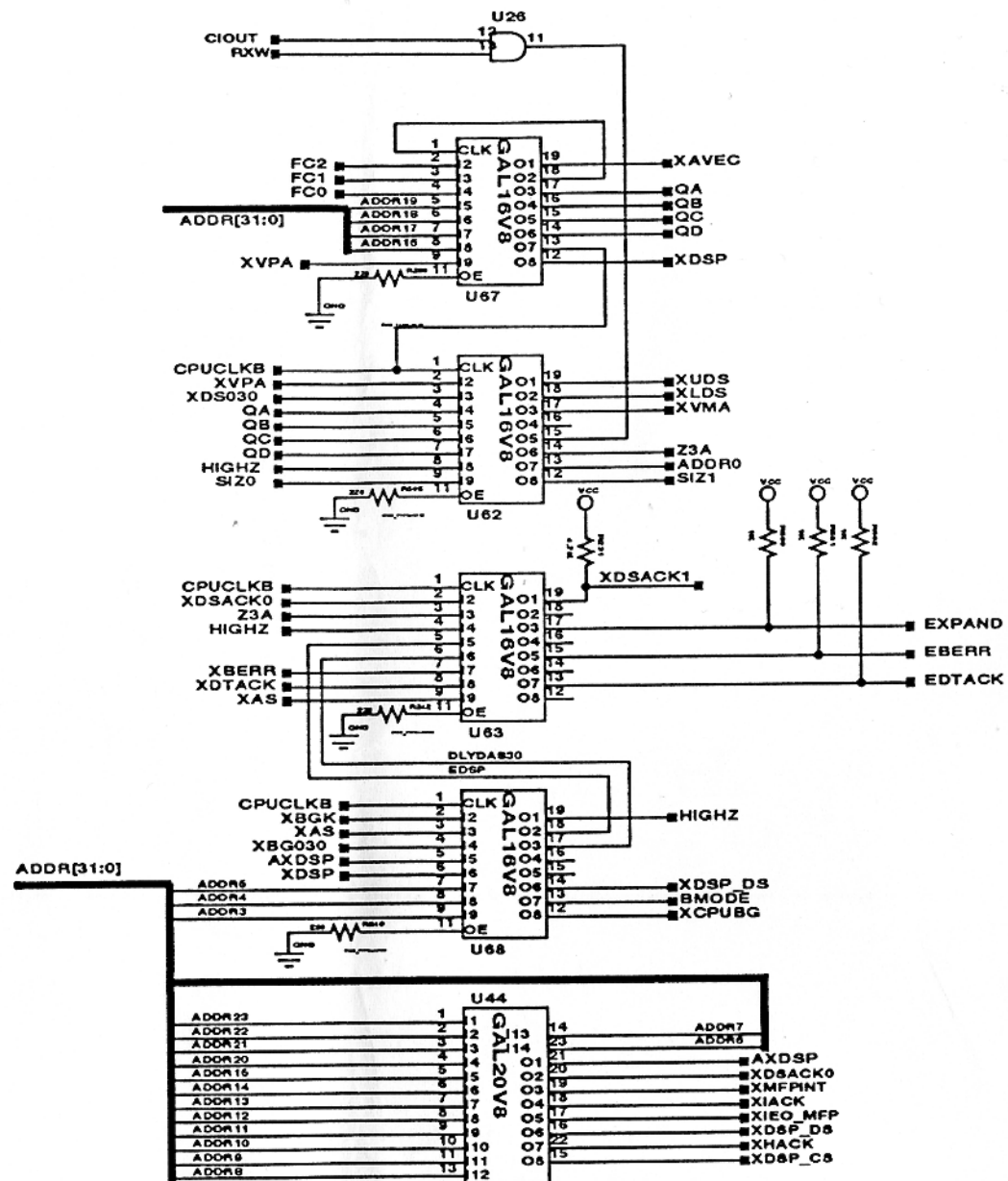
CLOCK TRACES, PARTICULARLY SCK, SCLK, AUXCLK MUST BE WIDE, WITH A FEW TURN-OFFS THROUGH AS POSSIBLE. USE CURVED TRACES IF POSSIBLE. KEEP TRACE WIDTHS CONSTANT, IF NOT, THEN TAPER SIGNALS TO AVOID SUDDEN IMPEDANCE CHANGES. KEEP COMPONENTS CLOSE TO THE IC'S AND LAY THEM OUT SO THAT THE SIGNAL PLANE IS AS STRAIGHT AS POSSIBLE. USE THE TAP-TO-BOARD TO BRIDGE THE ISOLATION GAP BETWEEN THE SYSTEM AND AUDIO VCC AND GND PLANE. KEEP THE AUDIO AND VCC TRACES LOW IMPEDANCE. USE WIDE TRACES AND 45 DEGREE ANGLES. USE THE ISOLATED VCC PLANE IN THIS AREA TO CARRY THE 12V POWER. AVCC IS ONLY USED BY THE CODEC.











Interface I D E



GND	2	1	Reset
DD 8	4	3	DD 7
DD 9	6	5	DD 6
DD 10	8	7	DD 5
DD 11	10	9	DD 4
DD 12	12	11	DD 3
DD 13	14	13	DD 2
DD 14	16	15	DD 1
DD 15	18	17	DD 0
Keypin	20	19	GND
GND	22	21	DMARQ
GND	24	23	D \overline{I} O \overline{W}
GND	26	25	D \overline{I} O \overline{R}
SPSYNC	28	27	IORDY
GND	30	29	DMACK
IOCS16	32	31	INTRQ
PDIAG	34	33	DA 1
DA 2	36	35	DA0
CS3FX	38	37	CS1FX
GND	40	39	DASP

Interface S C S I



DB0	2	1	Gnd
DB1	4	3	Gnd
DB2	6	5	Gnd
DB3	8	7	Gnd
DB4	10	9	Gnd
DB5	12	11	Gnd
DB6	14	13	Gnd
DB7	16	15	Gnd
DBP	18	17	Gnd
Gnd	20	19	Gnd
Gnd	22	21	Gnd
Gnd	24	23	Gnd
5 V (TERMPWR)	26	25	n.c.
Gnd	28	27	Gnd
Gnd	30	29	Gnd
ATN	32	31	Gnd
Gnd	34	33	Gnd
BSY	36	35	Gnd
ACK	38	37	Gnd
RST	40	39	Gnd
MSG	42	41	Gnd
SEL	44	43	Gnd
C/D	46	45	Gnd
REQ	48	47	Gnd
I/O	50	49	Gnd