
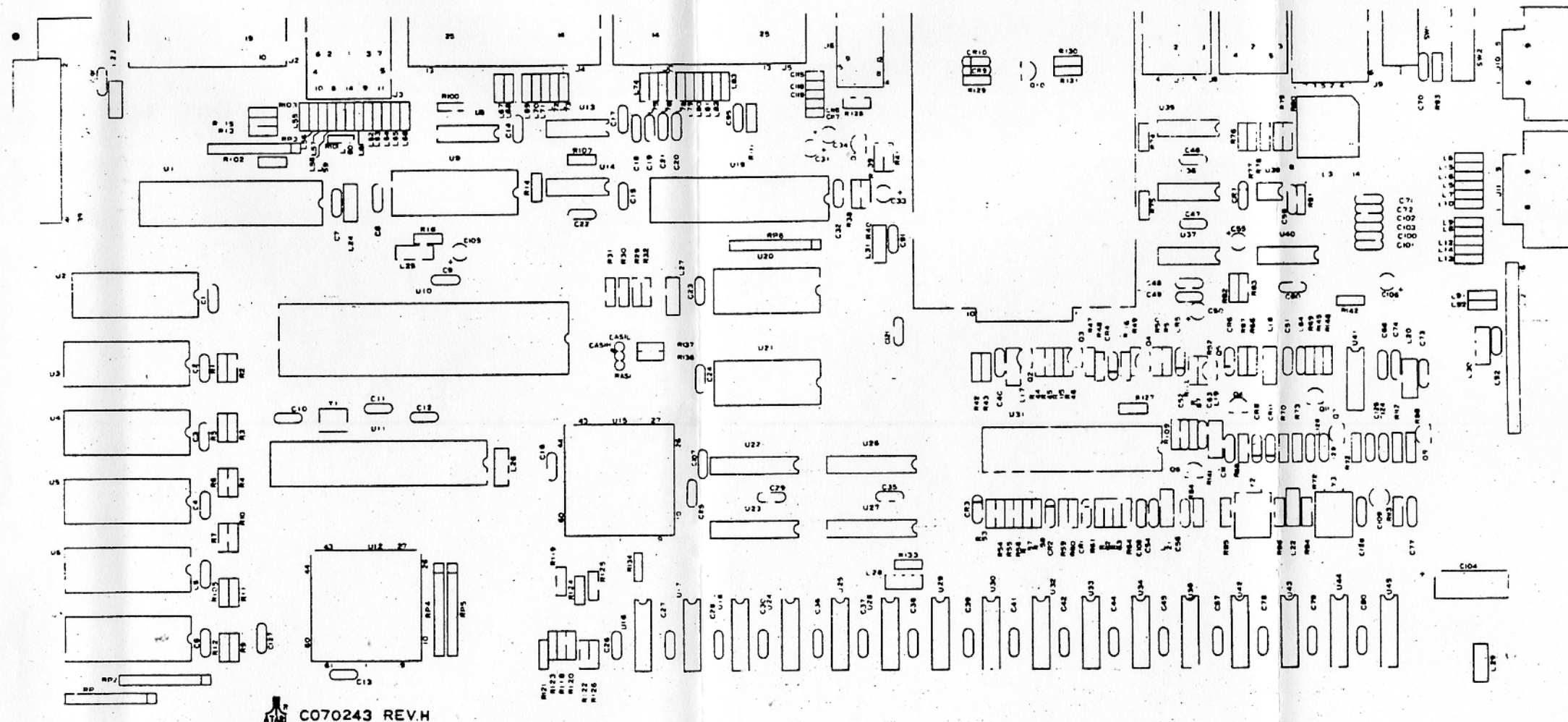


458

COMPONENT SIDE

USED ON	DRAWN BY	DATE	 ATARI (JAPAN) CORPORATION Toranomon Kiyoshi Building 3F 4-3-10, Toranomon Minato-ku, Tokyo 105
NEXT ASSY	N. H. H. S. 5-28 CHECKED DATE	K. Kitagawa 5-28 ENGINEER DATE	
MATERIAL	K. M. S. 5-28 APPROVED DATE	K. M. S. 5-28 APPROVED DATE	
FINISH	J. H. S. 5-28 APPROVED DATE	J. H. S. 5-28 APPROVED DATE	
TITLE P.C.B		SIZE C 0070243	
SCALE NONE		SHEET 2	

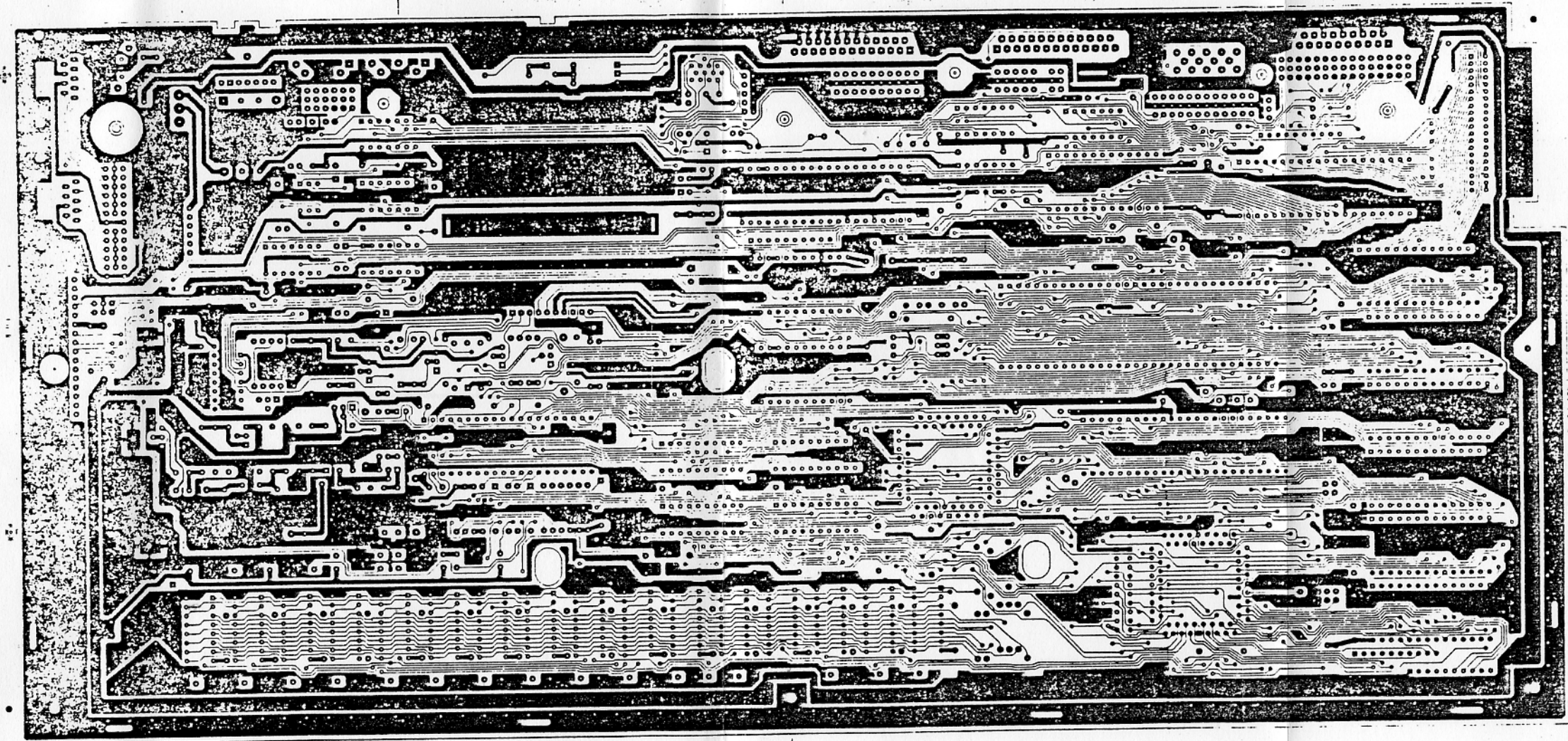


ATARI C070243 REV.H

SILK PRINT

DESIGNED S205T/2605T /S205T* CHECKED CA070052-XXX ENGINEER /CA070080-XXX MATERIAL	DRAWN BY <i>N. Kawanishi</i> DATE 5-2-86 CHECKED <i>K. Kawanishi</i> DATE 5-2-86 ENGINEER <i>K. Kawanishi</i> DATE 5-2-86 APPROVED <i>[Signature]</i> DATE 5-2-86	ATARI (JAPAN) CORPORATION Toranomon Kiyoshi Building 3F 4-3-10 Toranomon Minato-ku, Tokyo 105 TITLE P.C.B SIZE DRAWING NO C C070243 SCALE NONE	REV H SHEET 1 OF 5
--	--	---	---

0.1mm 1/16"



SOLDER SIDE

DESIGN NEXT ASSY MATERIAL FINISH	DRAWN BY <i>N. Kiyoshige</i>	DATE 5-2-86	ATARI (JAPAN) CORPORATION Toranomon Kiyoshi Building 3F 4-3-10, Toranomon Minato-ku, Tokyo 105 ATARI TITLE P.C.B. SIZE C 0070243 SCALE NONE	REV H	
	CHECKED 	DATE 		DRAWING NO. 0070243	SHEET 3 OF 5
	ENGINEER <i>K. Kiyoshige</i>	DATE 5-2-86			
	APPROVED <i>K. Kiyoshige</i>	DATE 5/2/86			