

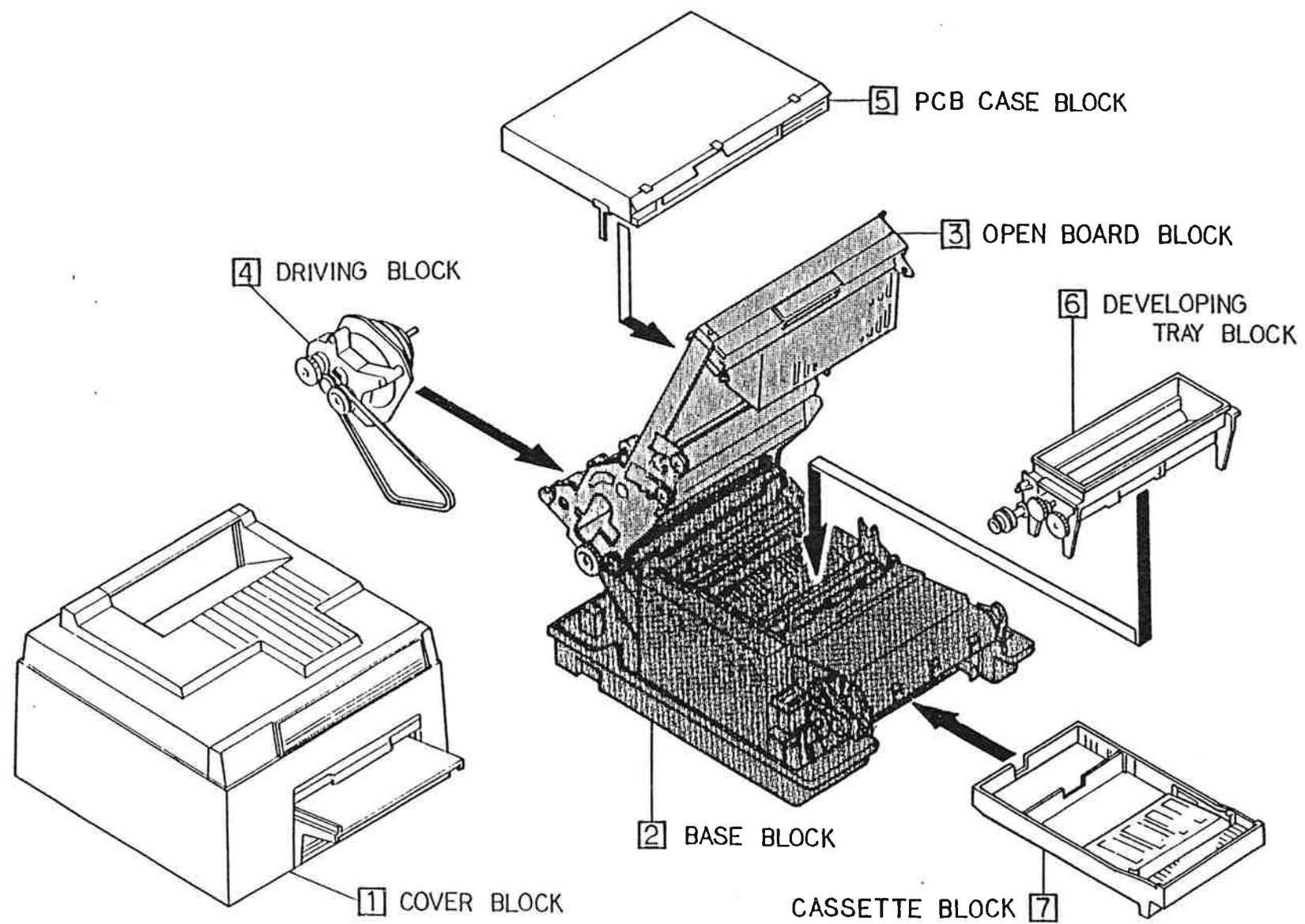
MODEL SLM-804
ORIGINAL MAY, 1987
(REVISED

DOCUMENT No. E 5 - 16_168

PARTS LIST

CONTENTS

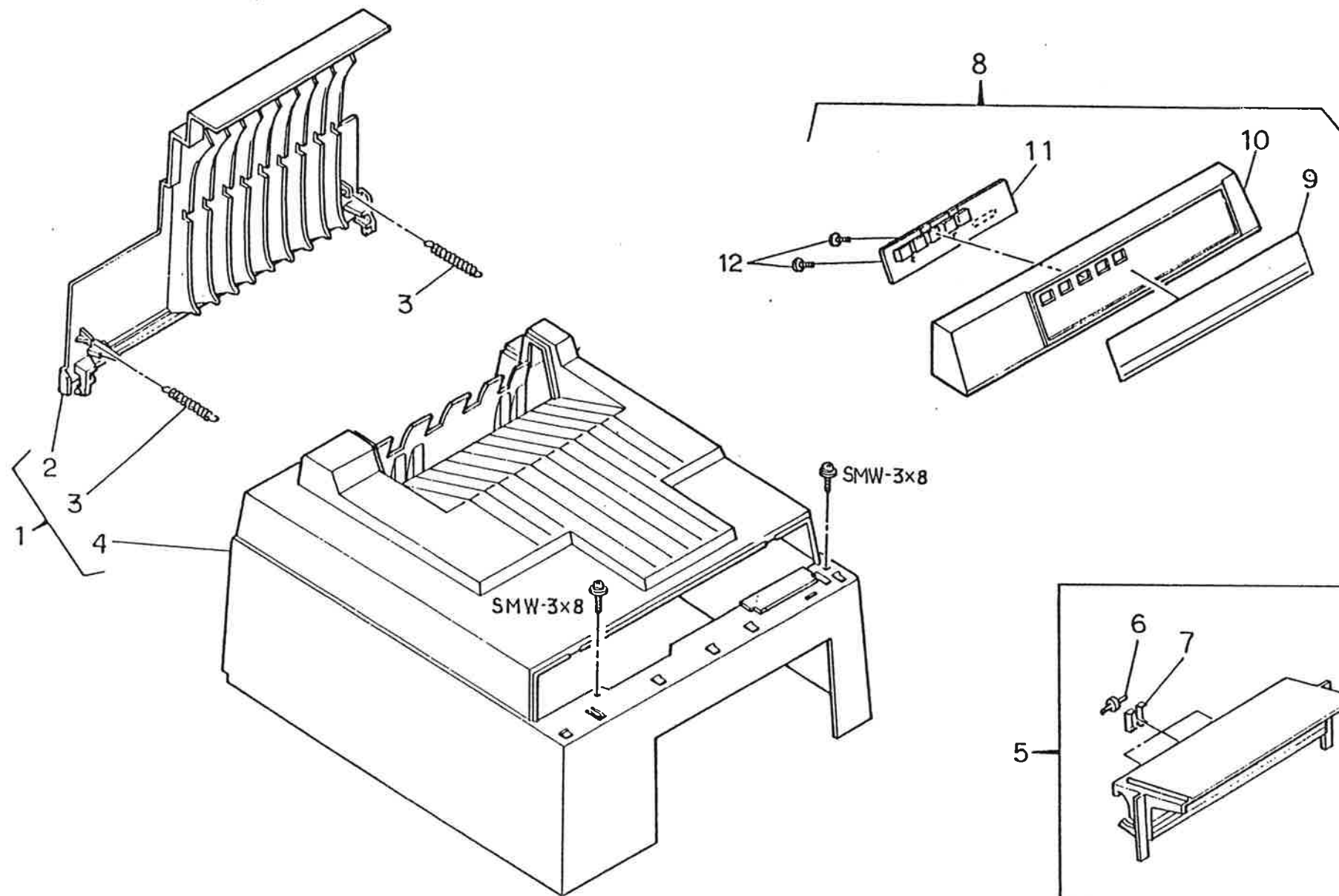
	PARTS LOCATION	1
1.	COVER BLOCK	2
2-1.	BASE BK BLOCK	4
2-2.	HEAT ROLLER BLOCK	7
2-3.	CASSETTE FEED SHAFT BLOCK	9
2-4.	GUIDE PLATE BLOCK	11
2-5.	PAPER FEED ROLLER BLOCK	13
2-6.	FRAME BLOCK	15
2-7.	BASE BLOCK	19
2-8.	SWITCH BLOCK (1)	22
2-9.	SWITCH BLOCK (2)	24
3-1.	OPEN BOARD BLOCK (1)	26
3-2.	OPEN BOARD BLOCK (2)	29
3-3.	PAPER DISCHARGE ROLLER BLOCK	32
3-4.	DISCHARGE ROLLER BLOCK	34
4.	DRIVING BLOCK	36
5.	PCB CASE BLOCK	38
6.	DEVELOPING TRAY BLOCK	40
7.	CASSETTE BLOCK	43
8.	MECHANICAL CONTROL PCB BLOCK	45
9.	ACCESSORIES	51



1

COVER BLOCK

-2-

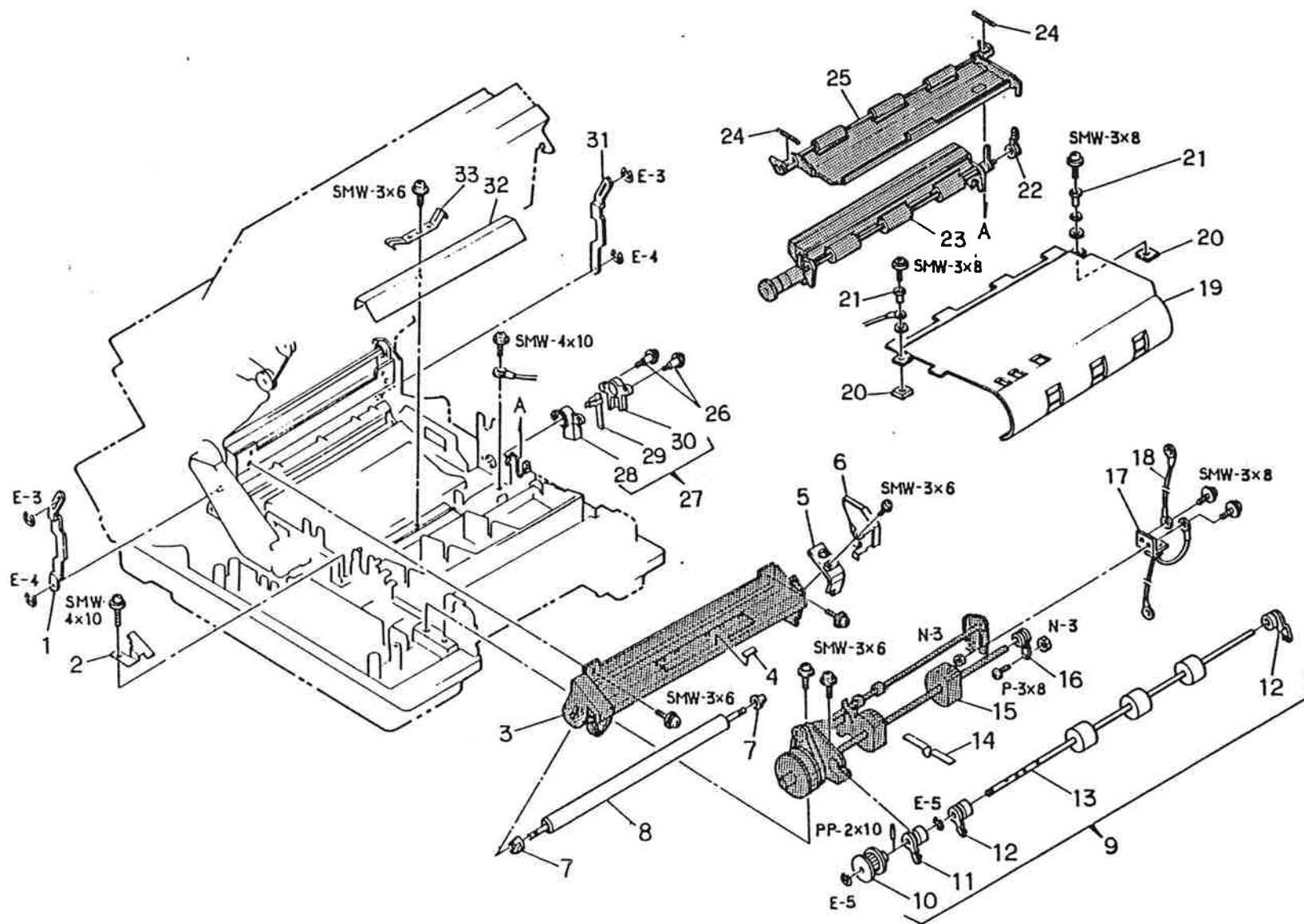


1

COVER BLOCK

[illegible]

2-1 BASE BK BLOCK



2-1

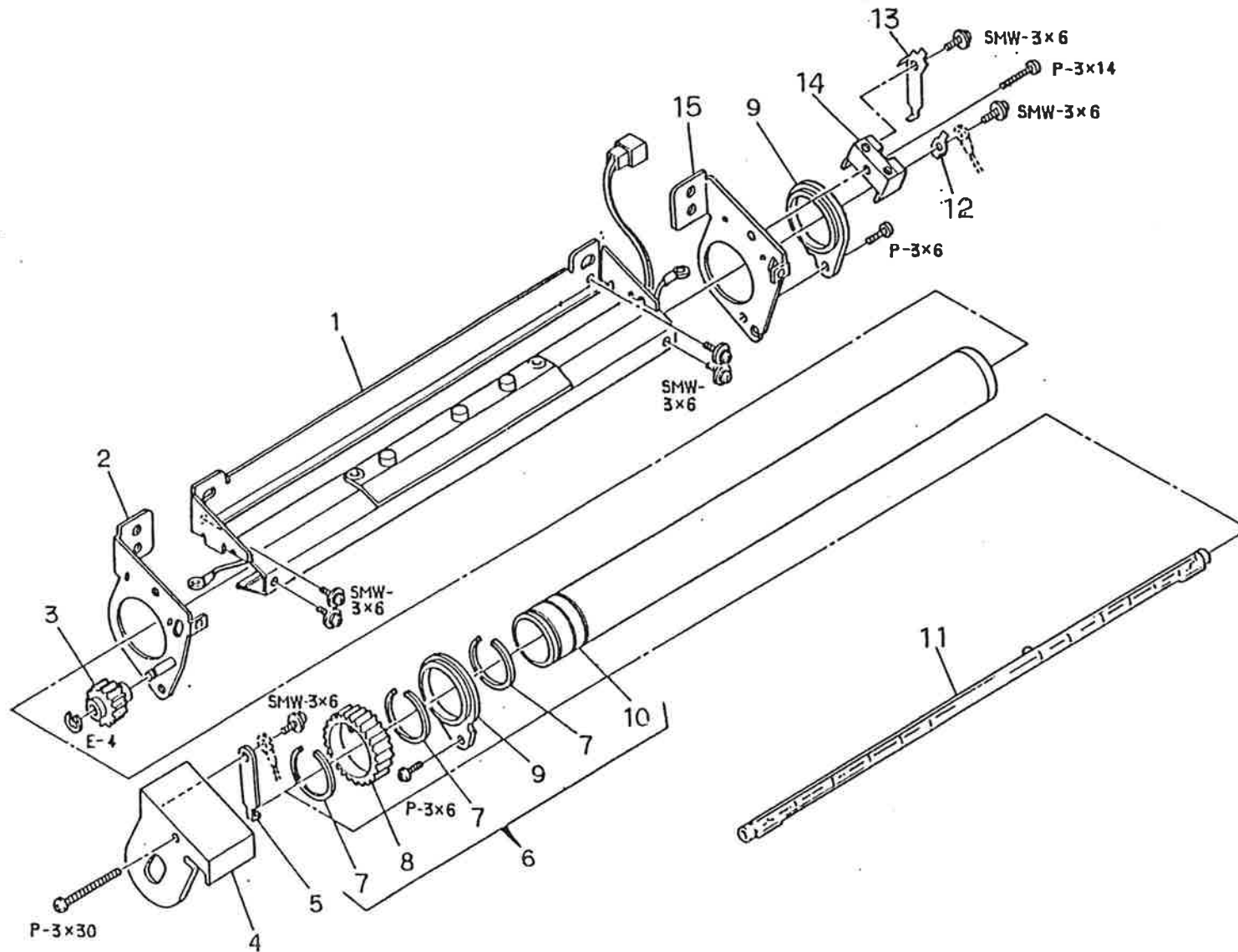
BASE BK BLOCK 1/2

Ref. No.	Part No.	Part Name	Remarks
2-1- 1	JRM20-25701	Press Arm (L)	
2-1- 2	JRMAK-26301	Side Roller AK	
2-1- 3	JRMBK-22801	Heat Roller BK (2)	US
	JRMBK-22802	Heat Roller BK (2)	EU
2-1- 4	JRM45-31401	Caution Label (US)	
2-1- 5	JRM35-23401	Heat Terminal Cover (R)	
2-1- 6	JRM20-31601	Terminal Cover	US
	JRMAK-27801	Terminal Cover	EU
2-1- 7	JRM35-30401	Press Roller Bush	
2-1- 8	JRM45-21301	Press Roller	
2-1- 9	JRMBK-21201	Feed Roller BK	
2-1-10	JRM35-25501	Feed Pulley	
2-1-11	JRM35-24201	Paper Feed Bush	
2-1-12	JRM35-23801	Cassette Feed Bush	
2-1-13	JRM45-21601	Feed Roller (B)	
2-1-14	JRM20-32201	Earth Plate	
2-1-15	JRMBK-21801	Cassette Feed Shaft BK	
2-1-16	JRM35-23802	Cassette Feed Bush	
2-1-17	JREAK-12802	Varister SW AK	
2-1-18	JRE61-13102	Earth Wire	
2-1-19	JRMAK-26601	Paper Guide, Bottom AK	
2-1-20	JRM45-39401	Spacer	
2-1-21	JRM35-35101	Bush P	

2-1

BASE BK BLOCK 2/2

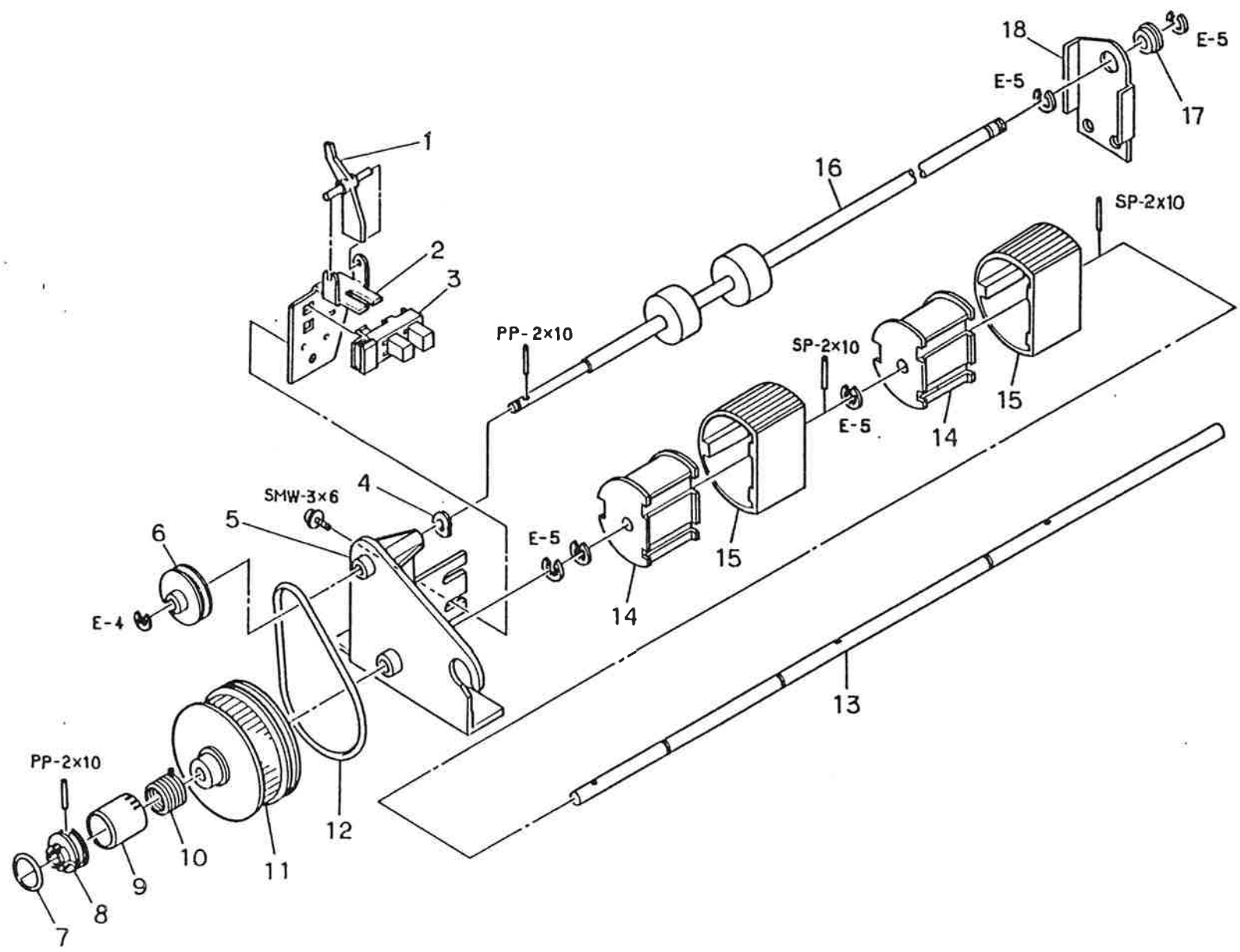
[illegible]



2-2

HEAT ROLLER BLOCK

Ref. No.	Part No.	Part Name	Remarks
2-2- 1	JRMAK-23601	Heat Plate (C) AK	US
	JRMAK-23602	Heat Plate (C) AK	EU
2-2- 2	JRMAK-20801	Heat Plate (L) AK	
2-2- 3	JRM35-21201	Heat Roller Idle Gear	
2-2- 4	JRM35-23501	Heater Terminal Cover (L)	
2-2- 5	JRM20-26101	Heater Terminal (1)	
2-2- 6	JRMBK-22701	Heat Roller BK (1)	
2-2- 7	JRM45-20901	Heat Roller Fixing Ring	
2-2- 8	JRM35-21101	Heat Roller Gear	
2-2- 9	JRM45-20701	Heat Bush	
2-2-10	JRM45-21201	Fix Roller	
2-2-11	JRM45-27801	Heater	200V
	JRM45-20801	Heater	100V
2-2-12	JRM20-26901	Heater Terminal (3)	
2-2-13	JRM20-26801	Heater Terminal (2)	
2-2-14	JRM35-23601	Heater Terminal Stand	
2-2-15	JRM20-25401	Heat Plate (R)	

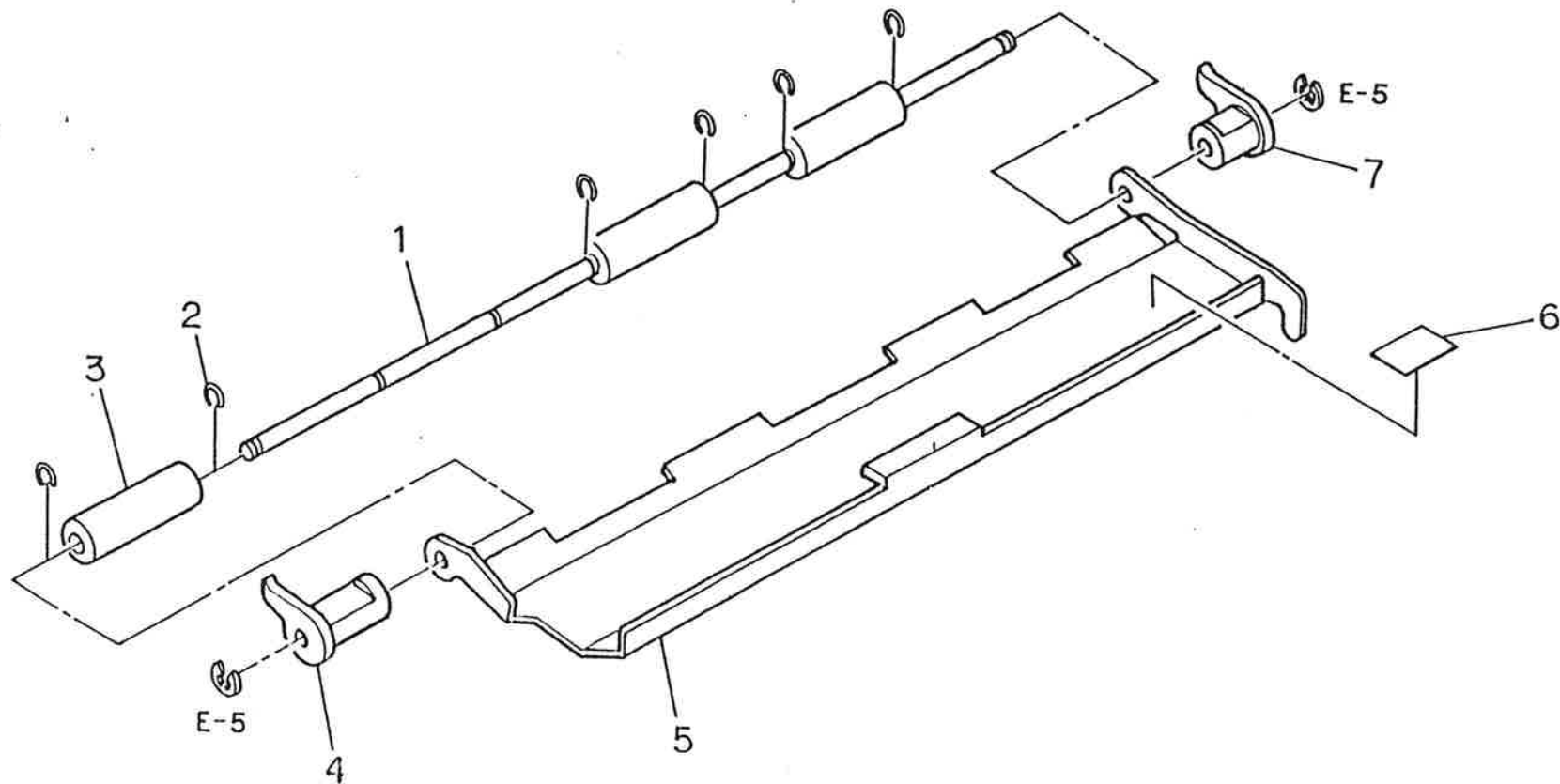


2-3

CASSETTE FEED SHAFT BLOCK

Ref. No.	Part No.	Part Name	Remarks
2-3- 1	JRM35-24301	Sensor Lever	
2-3- 2	JRM20-21701	Sensor Plate	
2-3- 3	JRM45-26501	Photo Interrupter	
2-3- 4	JXA45-01427	Polyslider Washer	
2-3- 5	JRM35-26201	Manual Insert Holder	
2-3- 6	JRM35-24001	Manual Insert Pulley	
2-3- 7	JRM45-22601	O Ring	
2-3- 8	JRM10-20601	Clutch Hub	
2-3- 9	JRM35-24901	Cassette Feed Ratchet	
2-3-10	JRM30-20601	Cassette Feed Clutch Spring	
2-3-11	JRM35-24101	Cassette Feed Pulley	
2-3-12	JRM45-24301	Manual Insert Belt	
2-3-13	JRM10-20901	Cassette Feed Shaft	
2-3-14	JRM35-20901	Cassette Feed Rubber Roller Hub	
2-3-15	JRM45-20401	Cassette Feed Rubber Roller	
2-3-16	JRM45-21901	Manual Insert Roller	
2-3-17	PVB45-00701	Cam Metal	
2-3-18	JRM20-32001	Manual Insert Roller Stay	

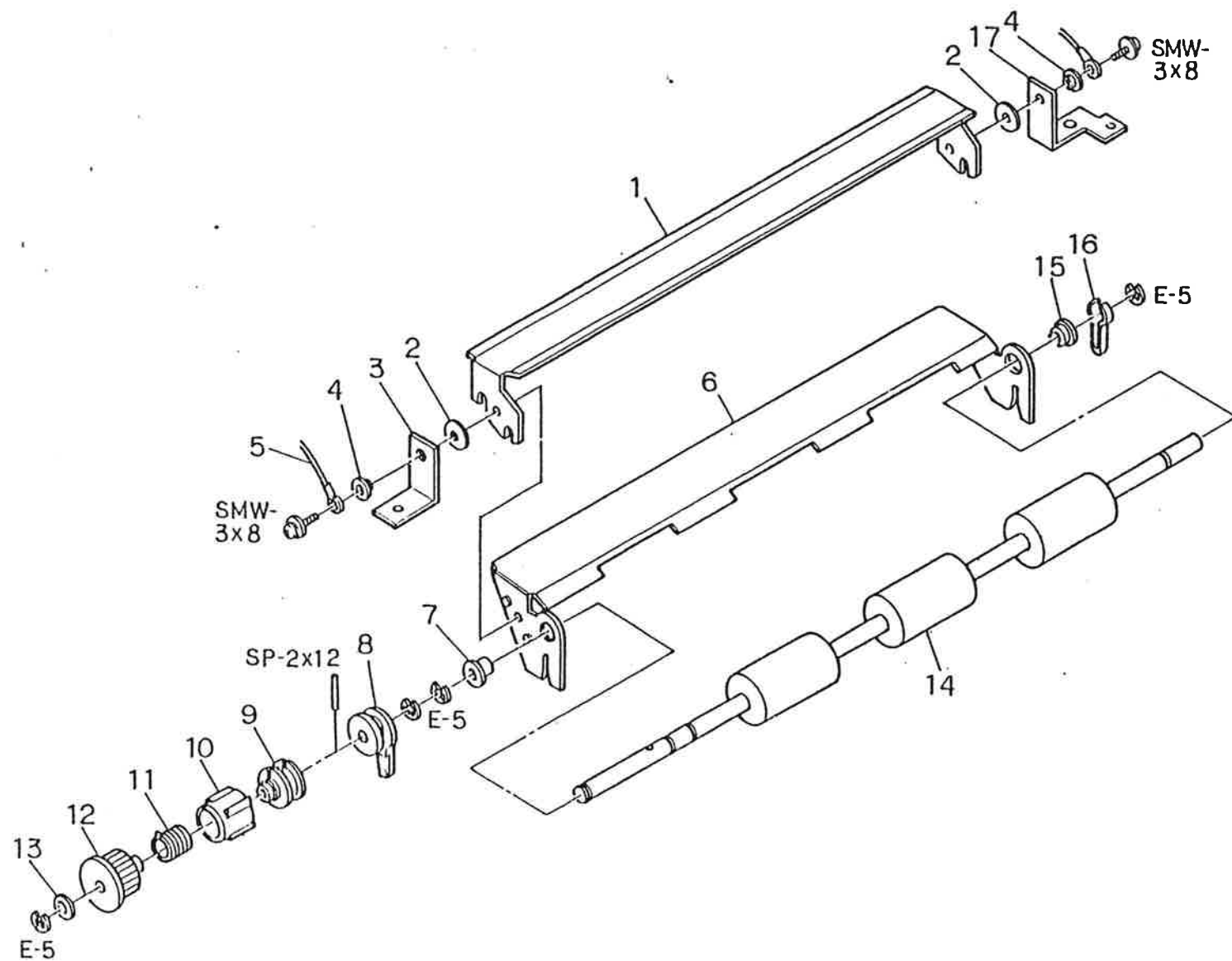
2-4 GUIDE PLATE BLOCK



GUIDE PLATE BLOCK

[illegible]

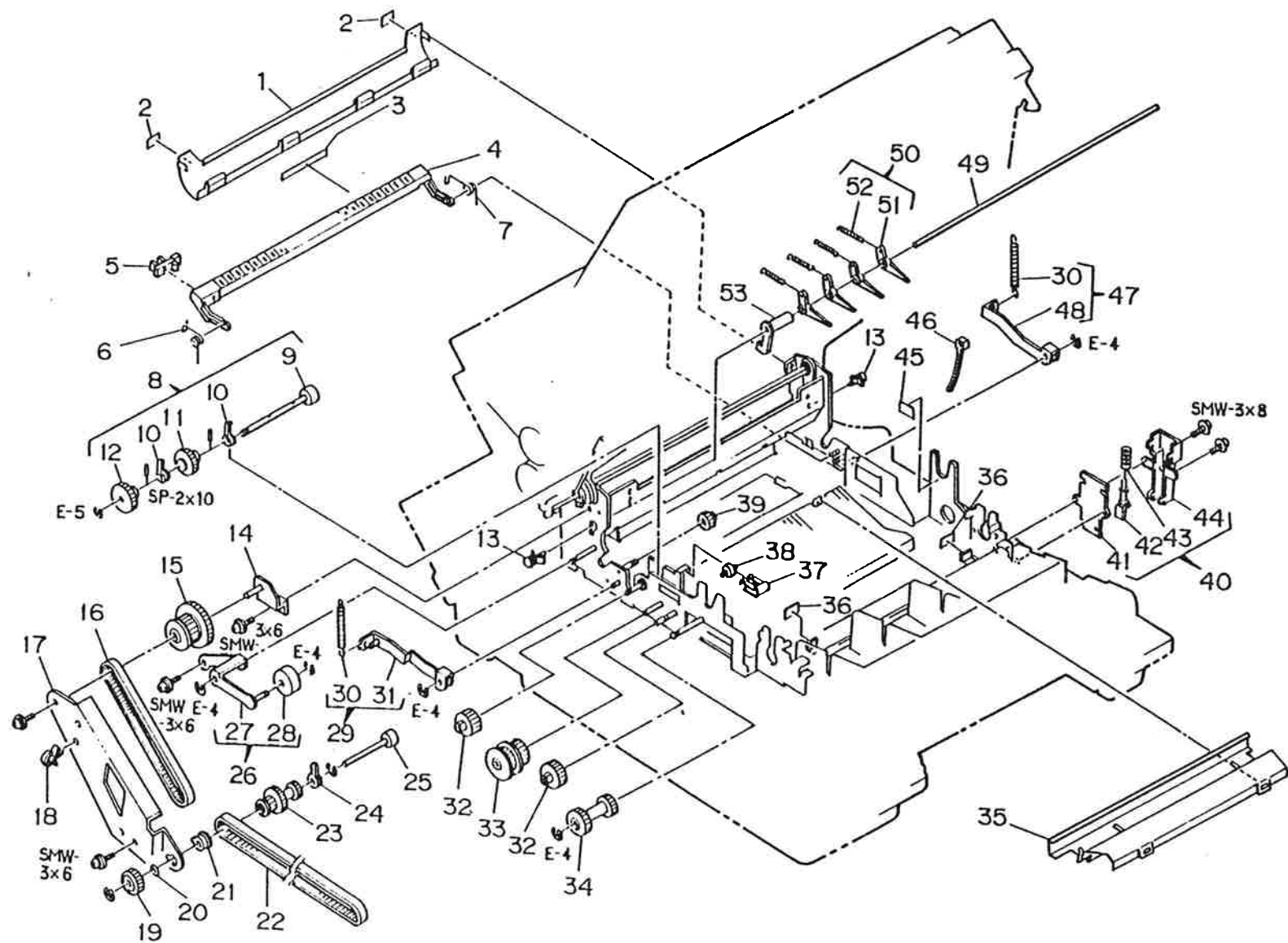
2- PAPER FEED ROLLER BLOCK



2-5

PAPER FEED ROLLER BLOCK

Ref. No.	Part No.	Part Name	Remarks
2-5- 1	JRM20-24101	Drum Paper Guide (B)	
2-5- 2	JRM45-39501	Drum Paper Guide Insulation Sheet	
2-5- 3	JRM20-31402	Drum Paper Guide Stay (L)	
2-5- 4	JRM35-35201	Bush D	
2-5- 5	JRE61-13104	Earth Wire	
2-5- 6	JRM20-24001	Drum Paper Guide (A)	
2-5- 7	PVB45-00701	Cam Metal (L)	
2-5- 8	JRM35-24201	Paper Feed Bush	
2-5- 9	JRM10-20601	Clutch Hub	
2-5-10	JRM35-25001	Paper Feed Ratchet	
2-5-11	JRM30-20701	Paper Feed Clutch Spring	
2-5-12	JRM35-24501	Paper Feed Timing Pulley	
2-5-13	PSA21-00201	Adjust Washer	
2-5-14	JRM45-24401	Paper Feed Roller	
2-5-15	CLA35-17201	Cam Metal (R)	
2-5-16	JRM35-30301	Paper Feed Brake Pad	
2-5-17	JRM20-31502	Drum Paper Guide Stay (R)	



2-6

FRAME BLOCK 1/3

Ref. No.	Part No.	Part Name	Remarks
2-6- 1	JRM20-24701	Fix Guide (3)	
2-6- 2	JRM45-34801	Warning Label US	
2-6- 3	JRM45-31401	Caution Label US	
2-6- 4	JRM20-25401	Fix Guide	
2-6- 5	JRM45-26501	Photo Interrupter	
2-6- 6	JRM30-22901	Fix Guide Spring (L)	
2-6- 7	JRM30-22801	Fix Guide Spring (R)	
2-6- 8	JRMBK-21401	Side Roller BK	
2-6- 9	JRM45-21401	Side Roller	
2-6-10	JRM35-24201	Paper Feed Bush	
2-6-11	JRM35-21301	Heat Roller Drive Gear	
2-6-12	JRM35-22401	Side Roller Gear	
2-6-13	QXM35-13002	KQPS-4NS	
2-6-14	JRMAK-21801	Main Pulley Stud Plate AK	
2-6-15	JRM35-20701	Main Pulley Gear	
2-6-16	JRM45-20601	Drum Timing Belt	
2-6-17	JRM20-30401	Sub Frame	
2-6-18	JRM45-34901	Cable Clamp	
2-6-19	JRM35-22901	Separate Roller Gear	
2-6-20	PSA21-00201	Adjust Washer	
2-6-21	JRM35-27901	Separate Roller Bush (L)	
2-6-22	JRM45-21501	Paper Feed Timing Belt	
2-6-23	JRM35-26301	Drum Drive Gear	

2-6

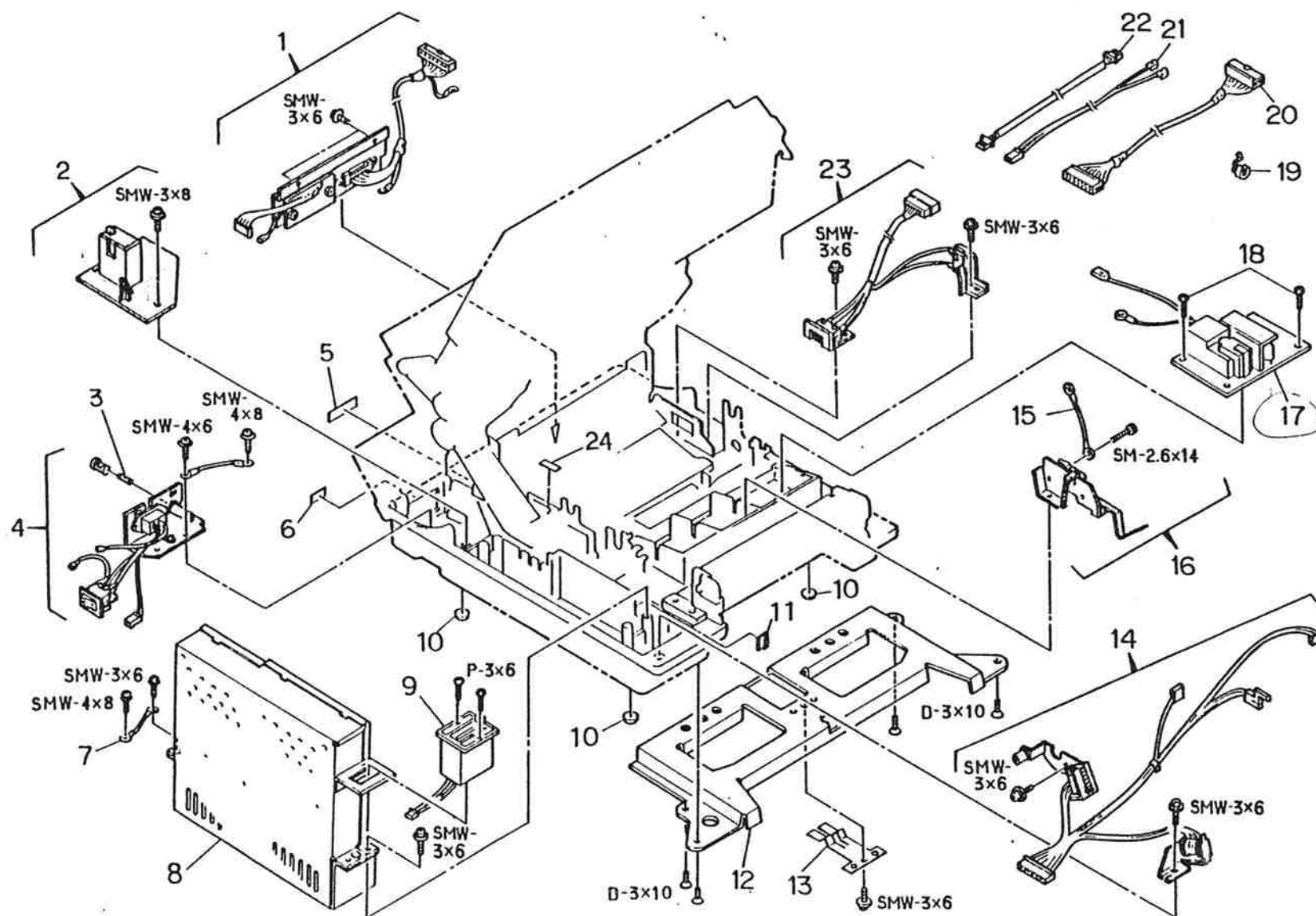
FRAME BLOCK 2/3

Ref. No.	Part No.	Part Name	Remarks
2-6-24	JRM35-27801	Separate Roller Bush (R)	
2-6-25	JRM45-22501	Separate Roller	
2-6-26	JRMBK-20901	Tension Arm BK	
2-6-27	JRMAK-21901	Tension Arm AK	
2-6-28	JRM35-20801	Tension Arm Roller (1)	
2-6-29	JRMBK-20601	Press Lever (L) BK	
2-6-30	JRM30-20301	Press Lever Spring	
2-6-31	JRMAK-21001	Press Lever (L) AK	
2-6-32	JRM35-22501	Idler Gear (A)	
2-6-33	JRM35-20601	Pulley Gear	
2-6-34	JRM35-25901	Idler Gear (B)	
2-6-35	JRMAK-26901	Fix Guide AK	
2-6-36	JRM45-39601	Frame Sheet	
2-6-37	JRMAK-26801	Side Roller Spring AK	
2-6-38	JRM35-22601	Pinch Roller	
2-6-39	JRM35-21201	Heat Roller Idler Gear	
2-6-40	JRMBK-25501	Bias Terminal BK	
2-6-41	JRM35-32801	Bias Terminal Cover (A)	
2-6-42	JRMAK-25401	Bias Terminal AK	
2-6-43	JRM30-23401	Bias Terminal Spring	
2-6-44	JRM35-32901	Bias Terminal Cover (B)	
2-6-45	JRM45-30501	Caution Label (A)	
2-6-46	EMA00-00401	Wire Band	

2-6

FRAME BLOCK 3/3

Ref. No.	Part No.	Part Name	Remarks
2-6-47	JRMBK-20701	Press Lever (R) BK	
2-6-48	JRMAK-20901	Press Lever (R) AK	
2-6-49	JRM10-20401	Strip Nail Shaft	
2-6-50	JRMBK-23101	Strip Nail BK	
2-6-51	JRM35-21001	Strip Nail	
2-6-52	JRM30-21901	Strip Nail Spring	
2-6-53	JRM35-30601	Fix Sensor Arm	



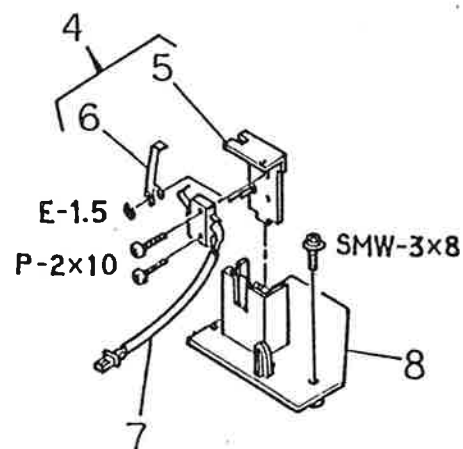
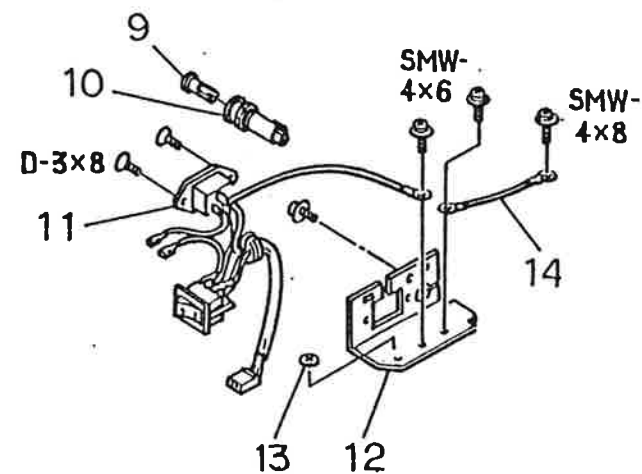
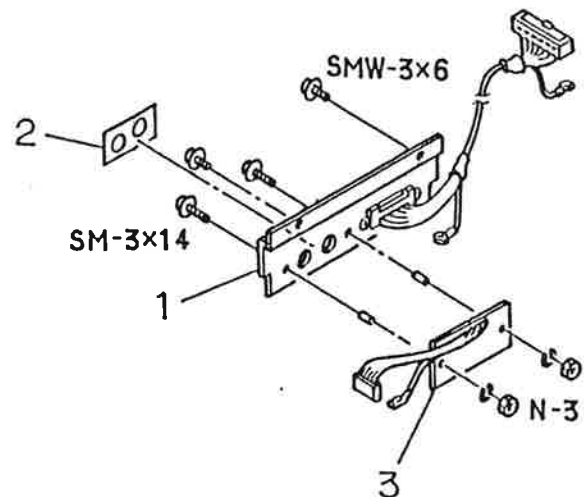
2-7

BASE BLOCK 1/2

Ref. No.	Part No.	Part Name	Remarks
2-7- 1	JRMBK-26801	Connector Holder AT BK	
2-7- 2	JRMBK-22301	Switch PCB Cover BK	US
	JRMBK-22302	Switch PCB Cover BK	EU
2-7- 3	EJG00-20700	Fuse	US
	EJG00-06900	Mini Fuse	EU
2-7- 4	JRMBK-23502	Inlet Holder BK	US
	JRMBK-23503	Inlet Holder BK	EU
2-7- 5	JRM45-28501	Warning Label	
2-7- 6	JRM45-36001	Fuse Label	US
	JRM45-36401	Fuse Label	EU
2-7- 7	JRE61-13102	Earth Cord	
2-7- 8	JRPBK-00202	Laser Beam Printer Power Supply Pack	US
	JRPBK-00204	Laser Beam Printer Power Supply Pack	EU
2-7- 9	JREAK-10201	Counter AK	
2-7-10	JRM45-40001	Foot Rubber	
2-7-11	EMA00-00100	Wire Holder	
2-7-12	JRMBK-20401	Cassette Base BK	
2-7-13	JRM30-21801	Cassette Stopper	
2-7-14	JRMBK-21301	Solenoid BK	
2-7-15	JRE61-13103	Earth Cord	
2-7-16	JRMBK-25601	Paper Empty Switch BK	
2-7-17	JRPBK-00502	High Voltage Power Supply Pack	
2-7-18	JRM45-23401	Tapping Screw	

BASE BLOCK 2/2

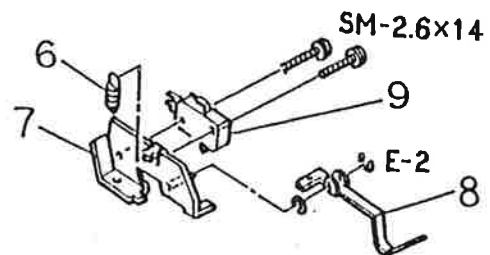
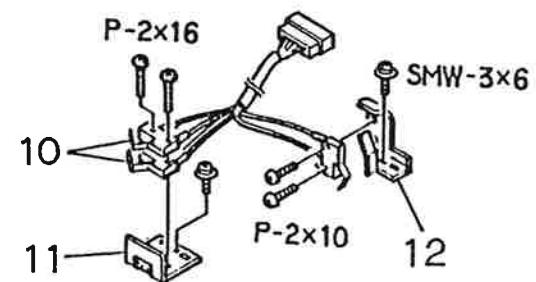
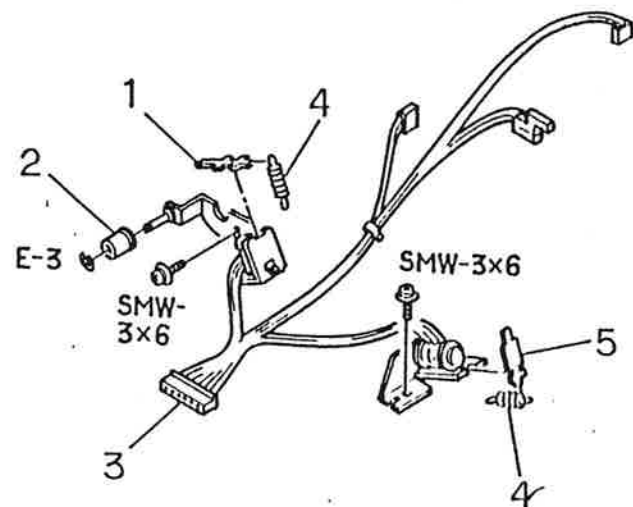
-21-



2-8

SWITCH BLOCK (1)

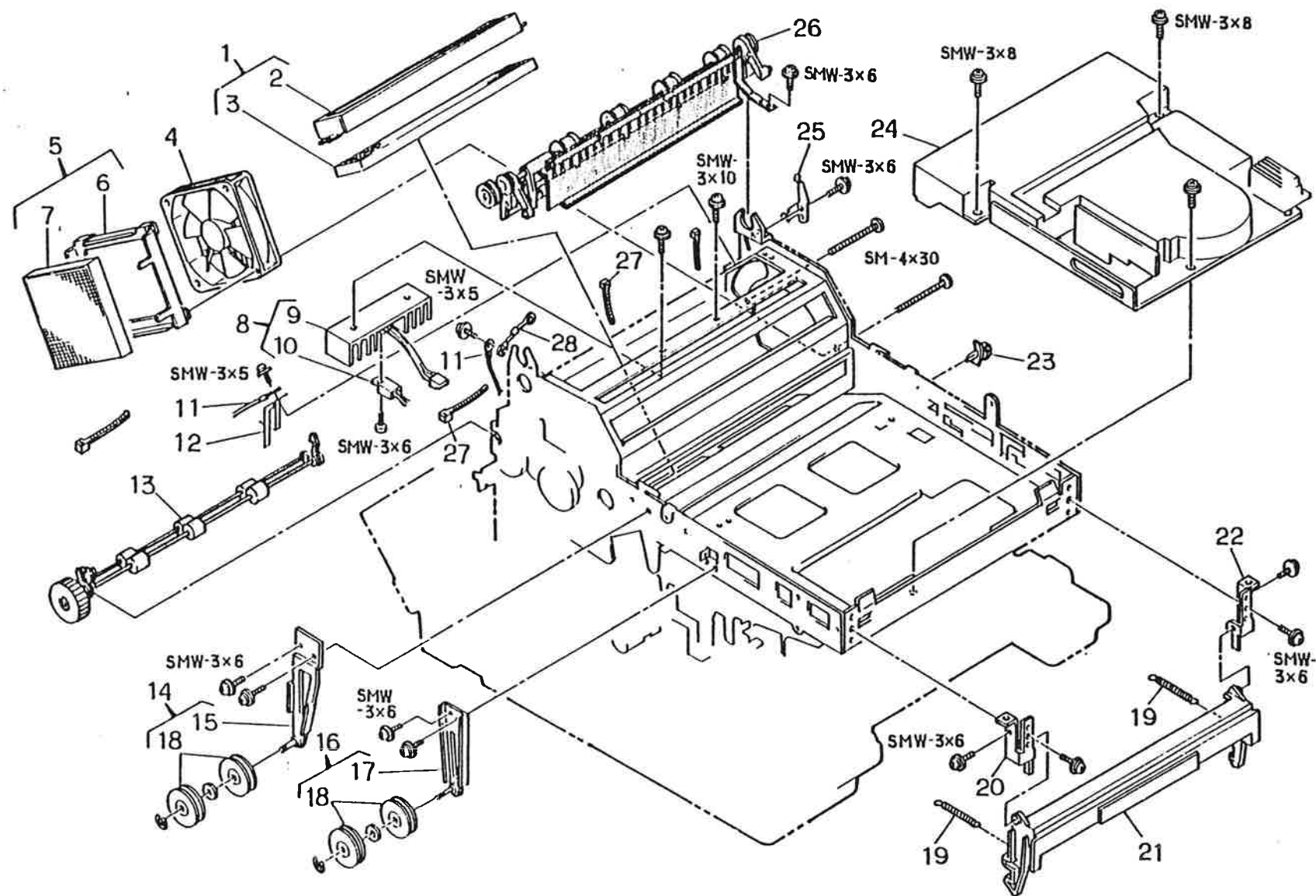
Ref. No.	Part No.	Part Name	Remarks
2-8- 1	JRMAK-27701	Connector Holder AK	
2-8- 2	JRM45-39101	Control Switch Sheet AT	
2-8- 3	JREAK-12701	Variable PCB AK	
2-8- 4	JRMBK-22201	Rear Switch BK	US
	JRMBK-22202	Rear Switch BK	EU
2-8- 5	JRMAK-23701	Rear Switch AK	US
	JRMAK-23702	Rear Switch AK	EU
2-8- 6	JRM20-28101	Rear Switch Lever	
2-8 7	JREAK-09101	Rear Cover Switch AK	US
	JREAK-09102	Rear Cover Switch AK	EU
2-8- 8	JRM35-31901	Switch PCB Cover	
2-8- 9	EMB00-02700	Fuse Holder Cover	US
	EMB00-02800	Fuse Holder Cover	EU
2-8-10	EMB00-04900	Fuse Holder	
2-8-11	JREAK-10501	Inlet AK	US
	JREAK-12901	Inlet AK	EU
2-8-12	JRM20-27801	Inlet Holder	
2-8-13	CLA45-72901	Earth Inscription Plate (N)	
2-8-14	JRE61-13101	Earth Cord	



2-9

SWITCH BLOCK (2)

[illegible]



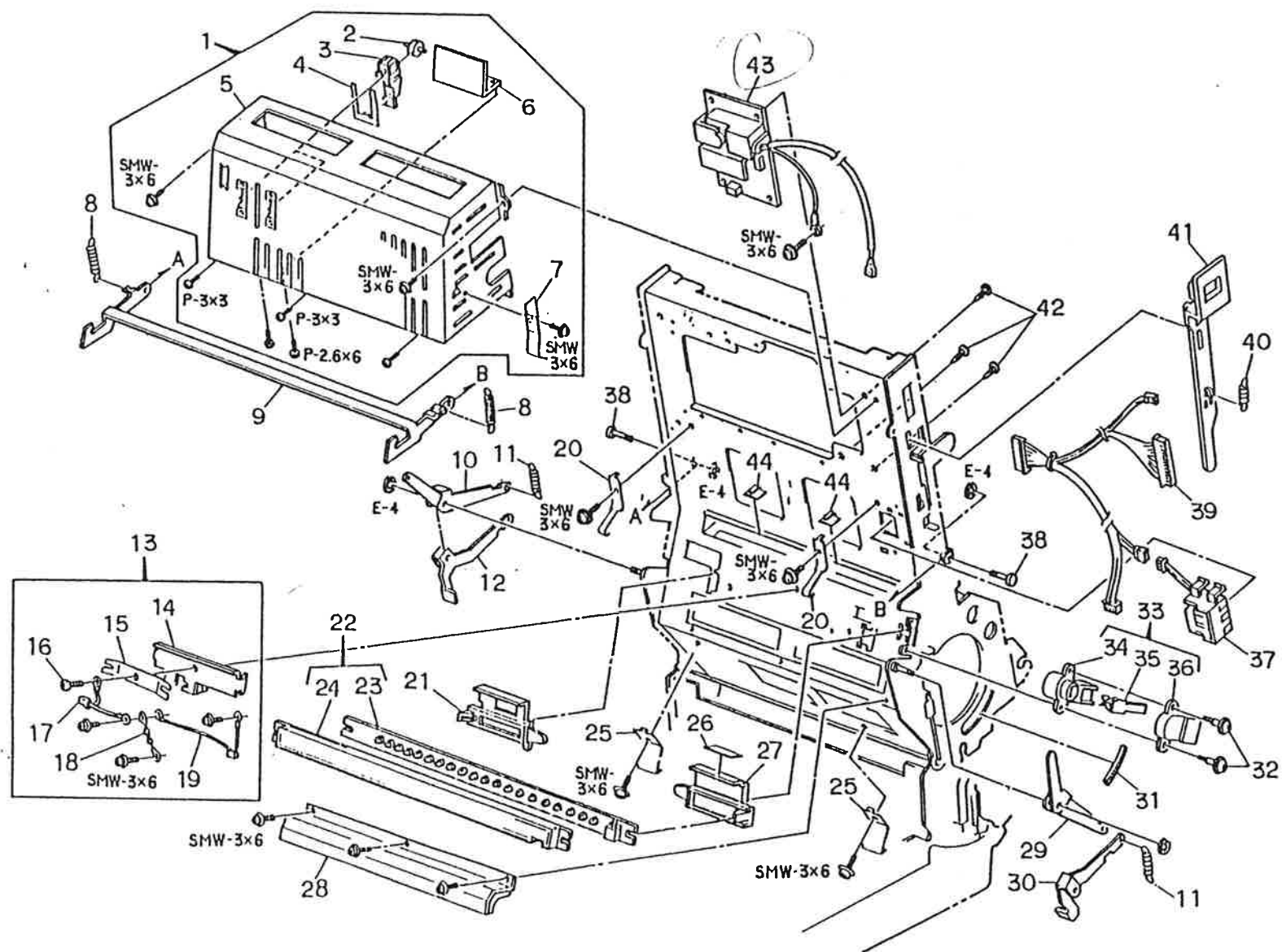
3-1

OPEN BOARD BLOCK (1) 1/2

Ref. No.	Part No.	Part Name	Remarks
3-1- 1	JRMBK-26601	Ozone Filter (2) BK	
3-1- 2	JRM20-31201	Filter Case (2)	
3-1- 3	JRM45-31101	Ozone Filter (2)	
3-1- 4	JREAK-10101	FAN AK	
3-1- 5	JRMBK-25801	Ozone Filter (1) BK	
3-1- 6	JRM20-31101	Filter Case (1)	
3-1- 7	JRM45-31001	Ozone Filter (1)	
3-1- 8	JREAK-10701	Transistor AK	
3-1- 9	ELK00-02600	Heat Sink	
3-1-10	EAA00-16500	Transistor	
3-1-11	EiH14M34019	Shield Wire Ass'y 1	
3-1-12	JRM20-32301	Discharge Earth Plate	
3-1-13	JRMBK-21701	Discharge Roller BK	
3-1-14	JRMBK-21101	Pulley Stay (B) BK	
3-1-15	JRMAK-21701	Pulley Stay (B) AK	
3-1-16	JRMBK-21001	Pulley Stay BK	
3-1-17	JRMAK-21601	Pulley Stay AK	
3-1-18	JRM35-28201	Idle Pulley	
3-1-19	JRM30-20401	Opening Hook Spring	
3-1-20	JRM20-20102	Opening Hook Stay (L)	
3-1-21	JRM35-26801	Opening Hook	
3-1-22	JRM20-20202	Opening Hook Stay (R)	
3-1-23	JRM45-26901	Wire Clamp	

OPEN BOARD BLOCK (1) 2/2

-28-



3-2

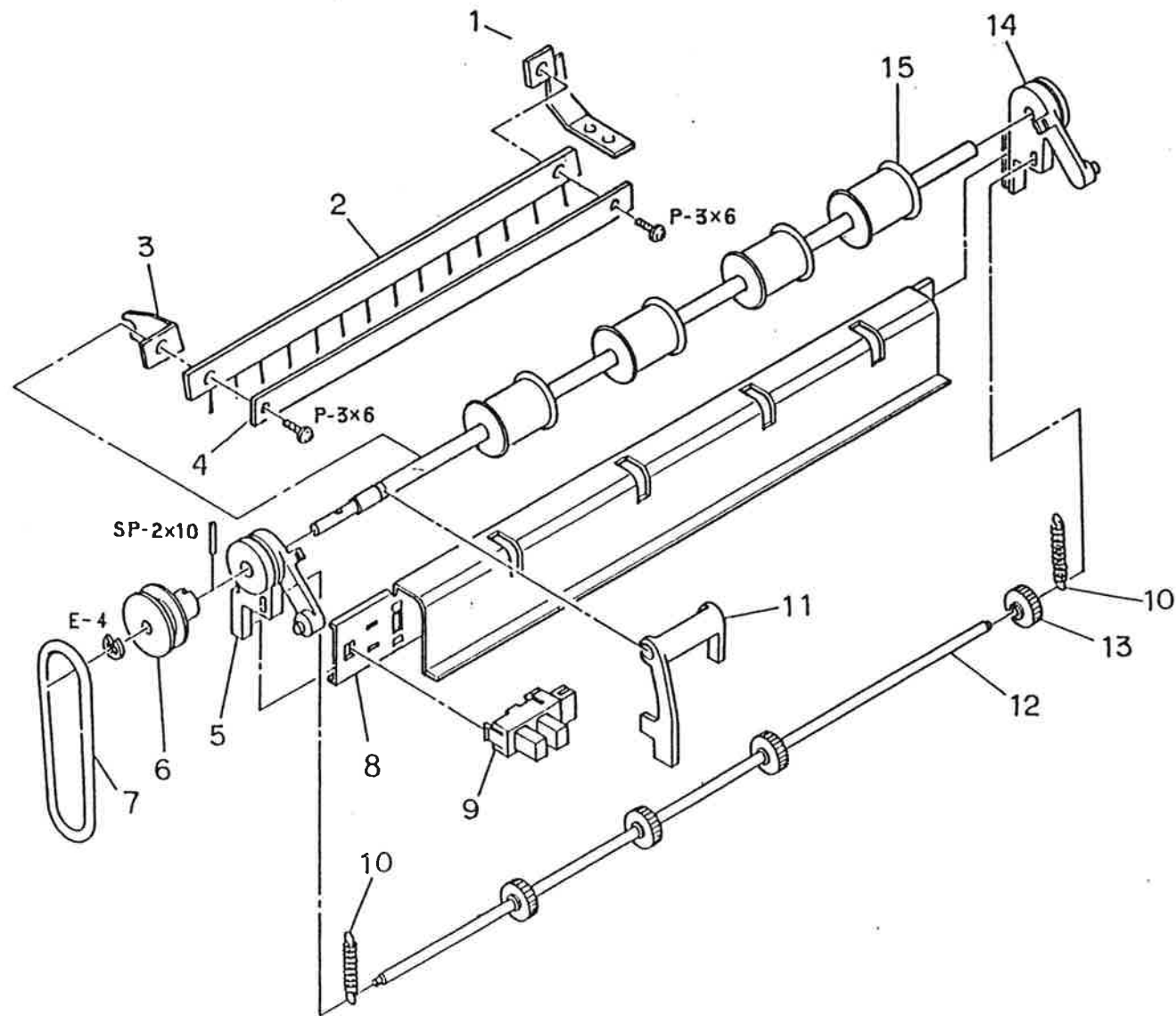
OPEN BOARD BLOCK (2) 1/2

Ref. No.	Part No.	Part Name	Remarks
3-2- 1	JRMBK-21501	Paper Guide, Top BK	
3-2- 2	JRM35-26401	Manual Insert Pinch Roller	
3-2- 3	JRM35-24801	Manual Insert Pinch Roller Holder	
3-2- 4	JRM30-20801	Manual Insert Spring	
3-2- 5	JRMAK-23101	Paper Guide, Top AK	
3-2- 6	JRM20-33701	Manual Insert Holder Plate	
3-2- 7	JRMAK-27001	Guide Stop Spring AK	
3-2- 8	JRM30-21301	Drum Lift Spring	
3-2- 9	JRM20-23901	Drum Lift	
3-2-10	JRM20-22801	Drum Stopper (L)	
3-2-11	JRM30-21101	Drum Stop Spring	
3-2-12	JRM20-23101	Drum Case Stopper (L)	
3-2-13	JRMBK-25301	Charger Insulation Plate BK	
3-2-14	JRM35-33001	Charger Insulation Plate	
3-2-15	JRM20-21801	Charger Spring	
3-2-16	JRM45-23403	Tapping Screw	
3-2-17	JRE61-16201	High Voltage Zener Diode	
3-2-18	JRE61-17801	High Voltage Resistor	
3-2-19	JRE61-17901	Resistor Herress Ass'y	
3-2-20	JRM30-22201	Developing Case Spring	
3-2-21	JRM35-23201	Charger Holder (L)	
3-2-22	JRMBK-26401	LAMP BK	
3-2-23	JREAK-11001	LAMP AK	

3-2

OPEN BOARD BLOCK (2) 2/2

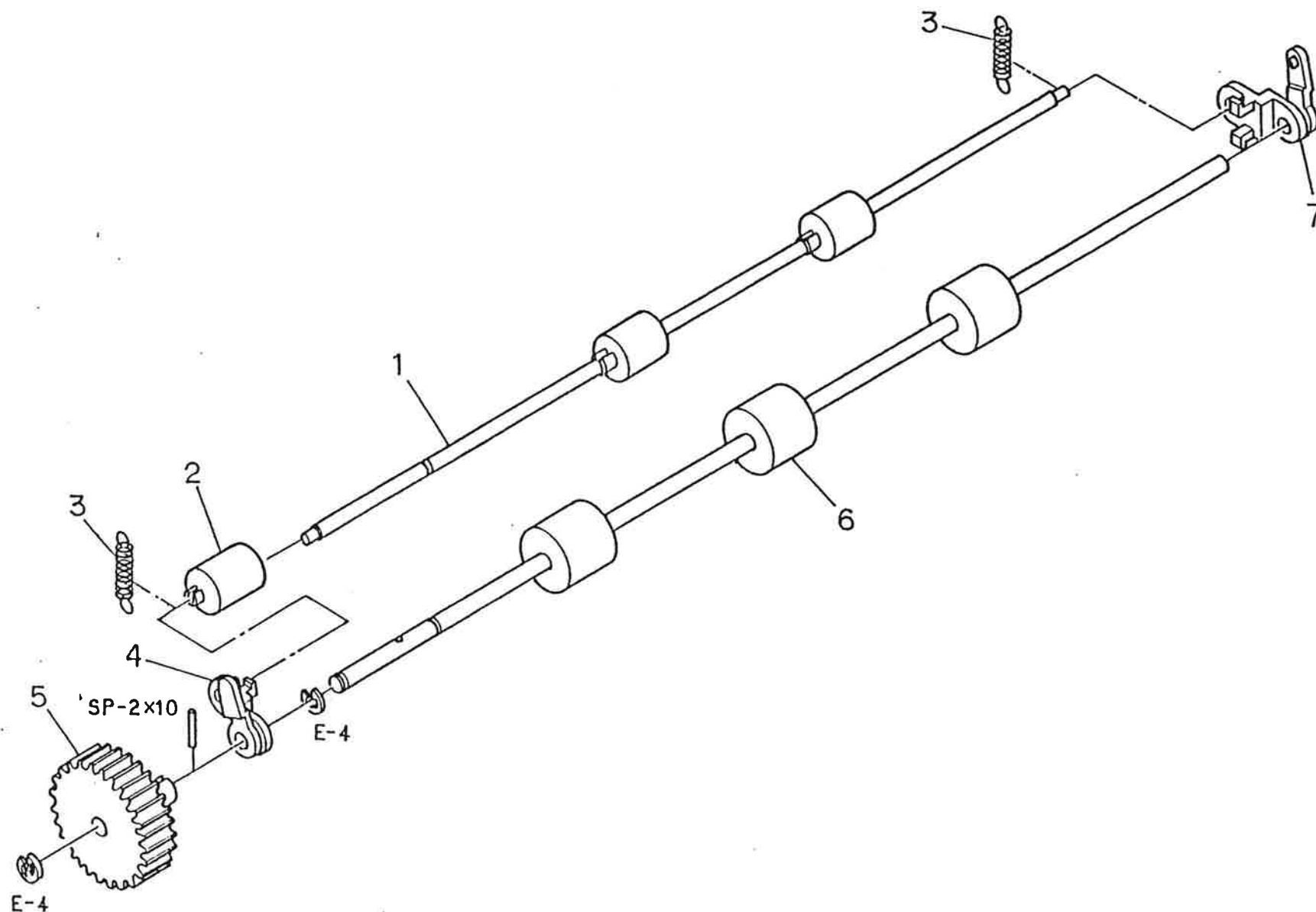
Ref. No.	Part No.	Part Name	Remarks
3-2-24	JRM35-22101	LAMP Case	
3-2-25	JRM30-22001	Cleaning Spring	
3-2-26	JRM45-30501	Caution Label (A)	
3-2-27	JRM35-23101	Charger Holder (R)	
3-2-28	JRMAK-25801	Adiabatic Plate AK	
3-2-29	JRM20-22901	Drum Stopper (R)	
3-2-30	JRM20-23001	Drum Case Stopper (R)	
3-2-31	QXM45-20403	Free Bush	
3-2-32	JRM45-21701	Sholdeck Screw	
3-2-33	JRMBK-22902	Charger Connector (B) BK	
3-2-34	JRMAK-23502	Connector (A) AK	
3-2-35	JRM20-20601	Touch Terminal	
3-2-36	JRM35-20501	Connector (B)	
3-2-37	JRMBK-24901	Terminal Plate BK	
3-2-38	JRM10-21201	Drum Lift Stud	
3-2-39	JRE61-14601	Herness 8 Ass'y	
3-2-40	JRM30-22501	Release Lever Spring	
3-2-41	JRM35-31203	Release Lever	
3-2-42	EMD00-05100	Locking Support (B)	
3-2-43	JRPBK-00501	High Voltage Power Supply Pack	
3-2-44	EMA00-00100	Wire Holder	



3-3

PAPER DISCHARGE ROLLER BLOCK

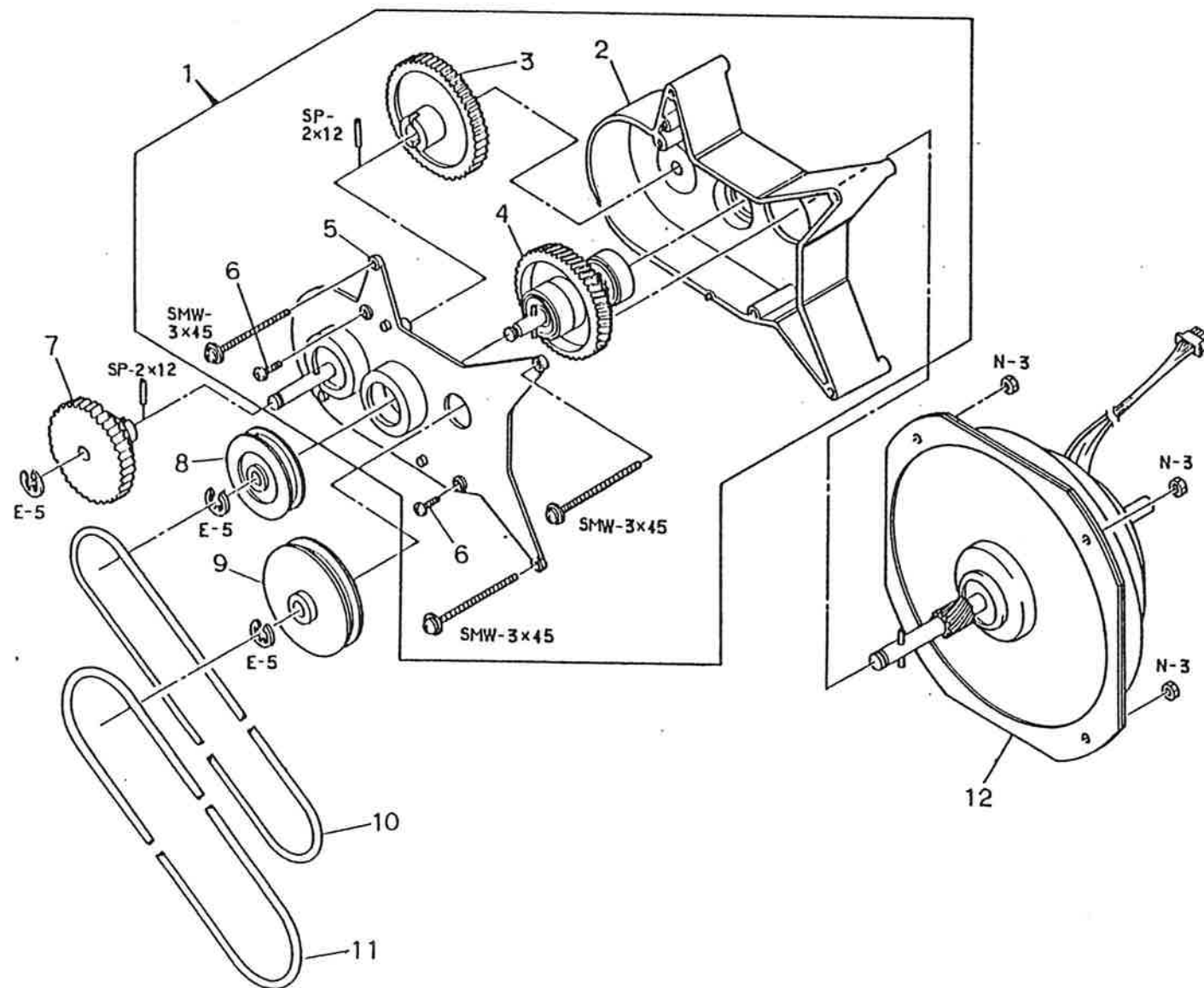
Ref. No.	Part No.	Part Name	Remarks
3-3- 1	JRMAK-27601	H Discharge Brush Stay AK	
3-3- 2	JRM45-34601	H Discharge Brush	
3-3- 3	JRM20-33101	H Discharge Stay (L)	
3-3- 4	JRM20-33201	H Discharge Cover	
3-3- 5	JRM35-25201	Paper Discharge Roller Bush (L)	
3-3- 6	JRM35-30701	Paper Discharge Pulley	
3-3- 7	JRM45-23901	Paper Discharge Belt	
3-3- 8	JRM20-22701	Paper Discharge Roller Cover	
3-3- 9	JRM45-26501	Photo Interrupter	
3-3-10	JRM30-22701	Paper Discharge Roller Spring	
3-3-11	JRM35-30501	Paper Discharge Sensor Arm	
3-3-12	JRM10-23301	Paper Discharge Pinch Roller Shaft	
3-3-13	JRM35-31001	Paper Discharge Pinch Roller	
3-3-14	JRM35-25101	Paper Discharge Roller Bush (R)	
3-3-15	JRM45-24201	Paper Discharge Roller	



3-4

DISCHARGE ROLLER BLOCK

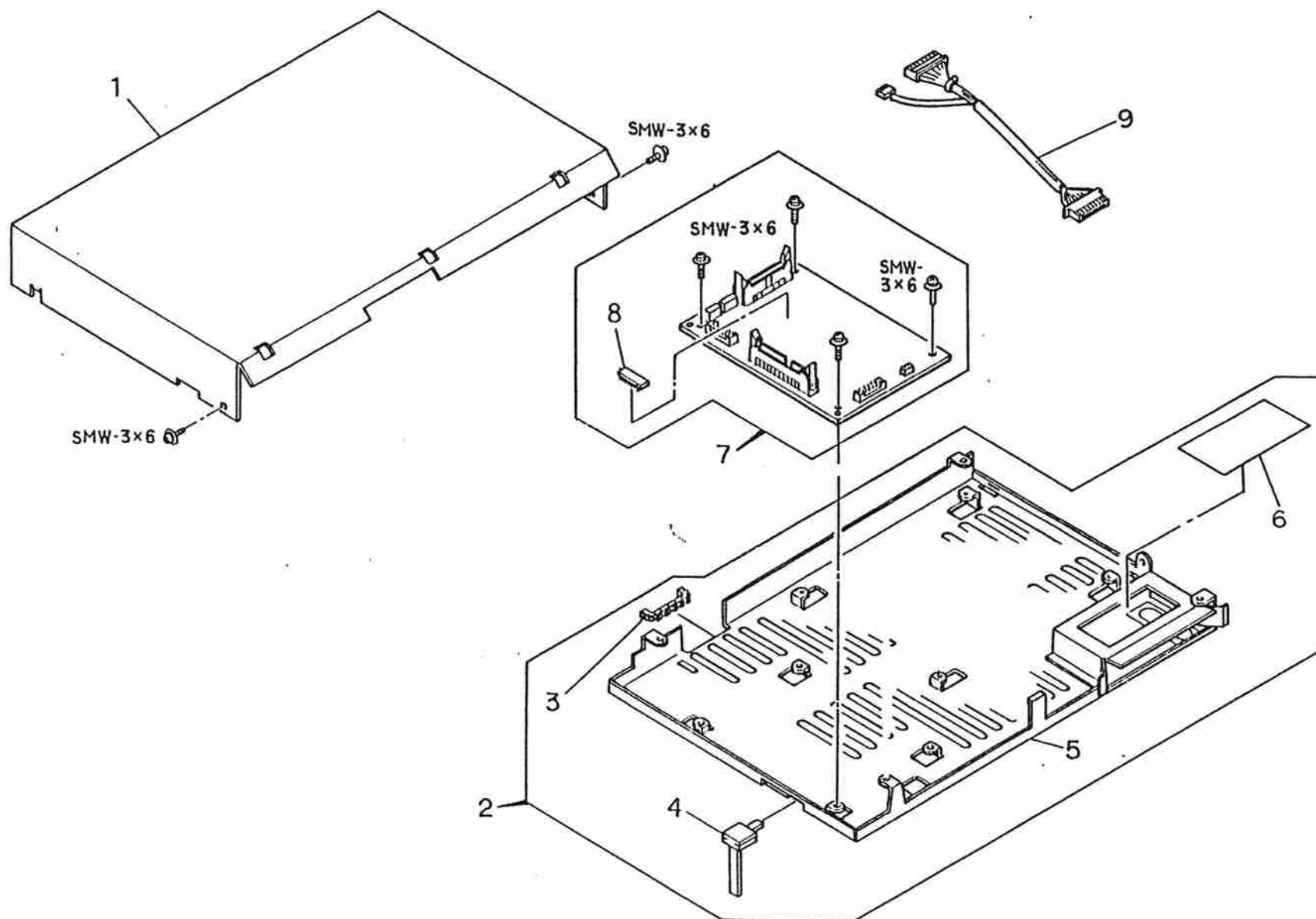
[illegible]



4

DRIVING BLOCK

[illegible]

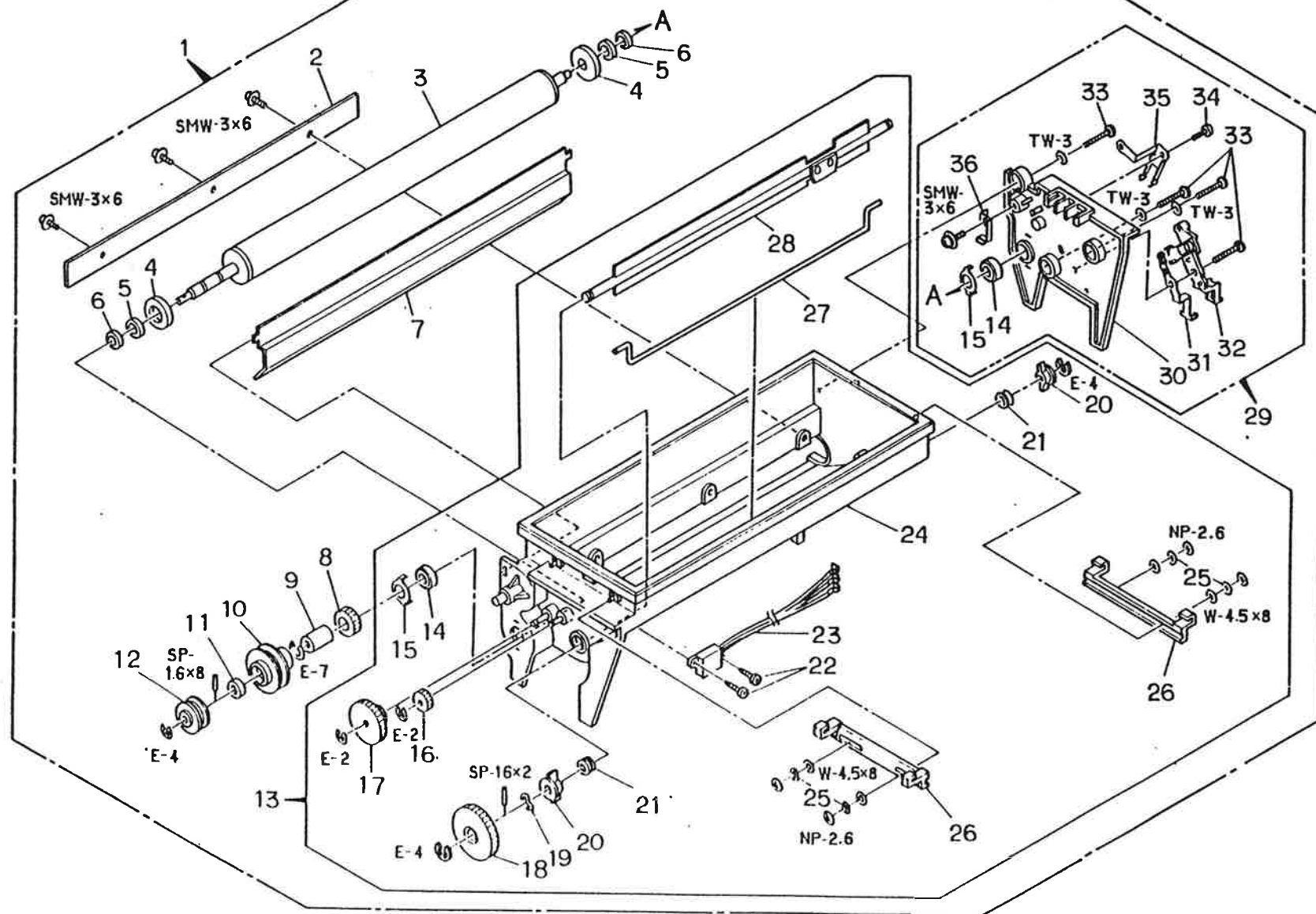


5

PCB CASE BLOCK

[illegible]

6 DEVELOPING TRAY BLOCK

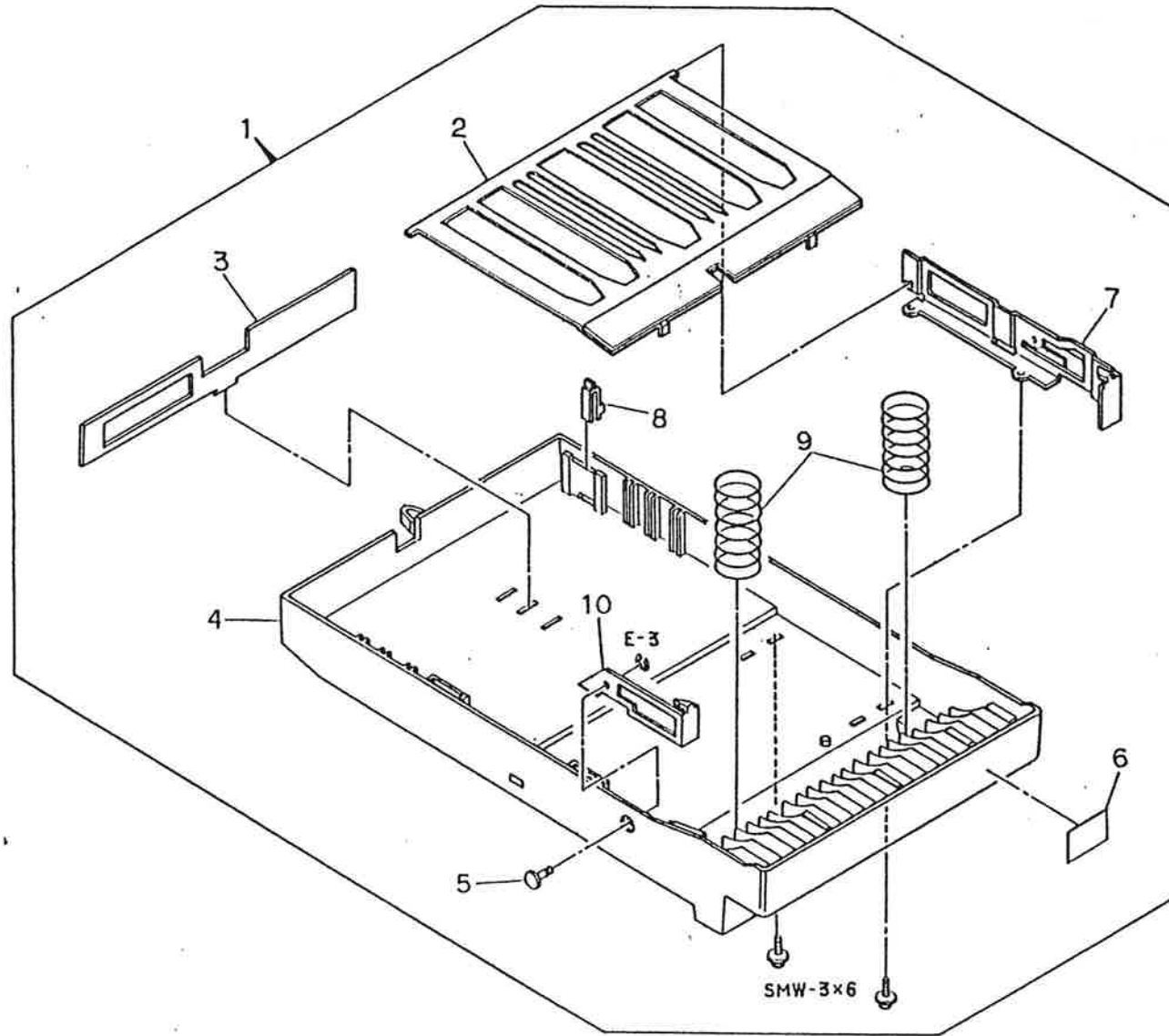


Ref. No.	Part No.	Part Name	Remarks
6- 1	JRP00-00701	Developing Unit Pack	
6- 2	JRM20-23501	Doctor Blade	
6- 3	JRM45-20102	Magnet Roll	
6- 4	JRM35-29401	Developing Roller	
6- 5	JRM45-23601	Bearing (1)	
6- 6	JRM10-22501	Spacer	
6- 7	JRM35-29801	Blade Cover	
6- 8	JRM35-27201	Shell Gear	
6- 9	JRM45-30401	Collar	
6-10	JRM35-29501	Shell Pulley	
6-11	JRM45-23801	Bearing (3)	
6-12	JRM35-29601	Mag Roller Pulley	
6-13	JRMBK-23802	Developing Case BK	
6-14	JRM45-23701	Bearing (2)	
6-15	JRM20-26301	Bearing Holder	
6-16	JRM35-27401	Idle Gear (B)	
6-17	JRM35-27301	Idle Gear (A)	
6-18	JRM35-27501	Rummage Roller Gear	
6-19	PIA20-01701	Drum Washer	
6-20	JRMAK-25601	Rummage Roller Bush AK	
6-21	JRM45-29901	V Ring	
6-22	JRM45-23403	Tapping Screw	
6-23	JRMAK-26001	Toner Sensor AK	

6

DEVELOPING TRAY BLOCK 2/2

[illegible]



Ref. No.	Part No.	Part Name	Remarks
7- 1	JRMBK-20311	Cassette BK	A4
	JRMBK-20314	Cassette BK	Letter, Legal
	JRMBK-20315	Cassette BK	B5
7- 2	JRMAK-20401	Cassette Plate AK	B5
	JRMAK-20402	Cassette Plate AK	A4
	JRMAK-20403	Cassette Plate AK	Letter, Legal
7- 3	JRMAK-23203	Cassette Divide Plate AK	
7- 4	JRM35-20103	Cassette Case	
7- 5	JRM10-20101	Cassette Strip Nail SD-A	
7- 6	JRM45-42001	Cassette Label B5 AT	B5
	JRM45-41901	Cassette Label A4 AT	A4
	JRM45-42101	Cassette Label LT/LG AT	Letter, Legal
7- 7	JRMAK-20301	Cassette Plate Guide AK	
7- 8	JRM35-25701	Cassette Chip	Letter, Legal
7- 9	JRM30-20201	Cassette Spring	
7-10	JRM20-20401	Cassette Strip Nail (L)	



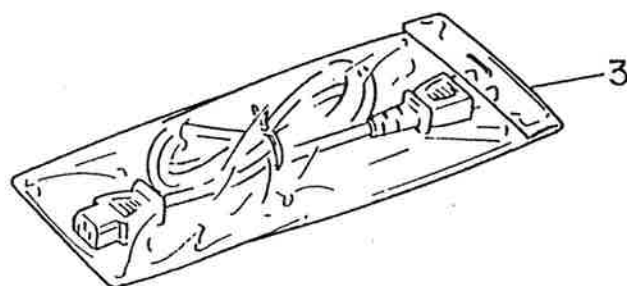
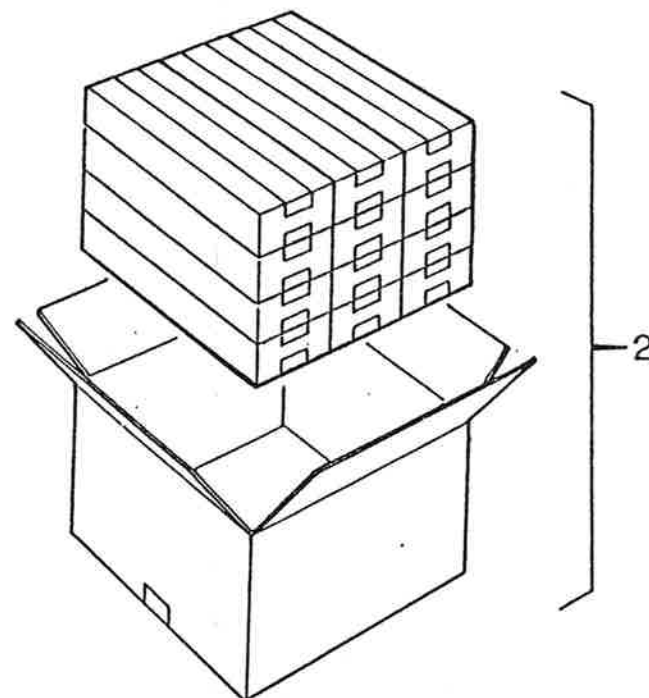
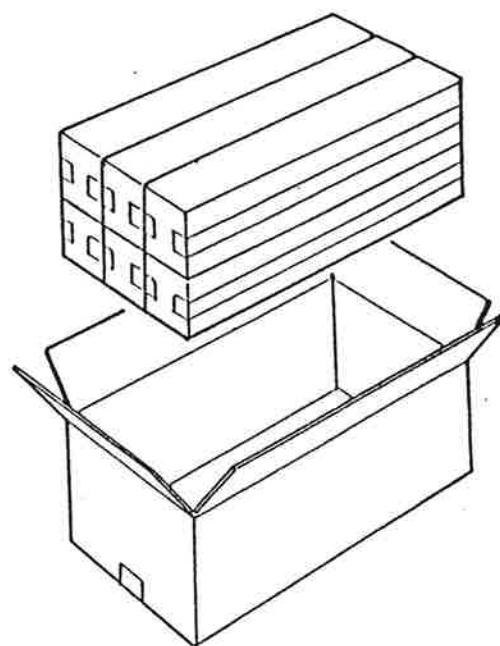
Ref. No.	Part No.	Part Name		Remarks
IC1,6,25,28	EAQZ0-02300	TTL IC	74LS14NS	
IC2	EASZ0-00300	Linear IC	TA75339F	
IC3	EAQZ0-03000	TTL IC	74LS161NS	
(IC5)	EED00-08100	IC Socket	Dic S-64AS	
IC7	EAQZ0-04300	TTL IC	74LS32NS	
IC8,13	EAQZ0-02200	TTL IC	74LS00NS	
IC9,15	EAQZ0-00100	TTL IC	74LS04NS	
IC10	EAQZ0-02400	TTL IC	74LS123NS	
IC11,26	EAQZ0-02700	TTL IC	74LS08NS	
IC12	EAQZ0-02600	TTL IC	74LS10NS	
IC14,29,33	EAQZ0-03300	TTL IC	74LS07NS	
IC16	EAO01-39700	Timer IC	8253C-2	
IC17,27,32	EAQZ0-03200	TTL IC	74LS06NS	
IC18,19	EAQZ0-02900	TTL IC	74LS74ANS	
IC20	EAQZ0-04700	TTL IC	74LS273FP	
IC21	EAS00-13100	Linear IC	TC9142P	
IC22	EAS00-16800	Linear IC	TD62308BP	
IC23	EASZ0-00200	Linear IC	TA75902F	
IC24	EAS00-22700	Linear IC	HA7808	
IC31	EAQZ0-04600	TTL IC	74LS244FP	
Q1,3	EAA00-27400	Transistor	2SC2712	
Q2	EAB00-14600	Transistor	2SA1162	

Ref. No.	Part No.	Part Name	Remarks
D1,3	EAC00-15800	Diode 1SS187	
D2	EAC00-08100	Diode ERB81-004	
R1,18,113,122, 126,127,129, 132	ECCZCT102JC	Resistor 1K	
R2	ECCZCT751JC	Resistor 750	
R3	ECCZCT332JC	Resistor 3.3K	
R4	ECCZCT432JC	Resistor 4.3K	
R5,103	ECCZCT392JC	Resistor 3.9K	
R6-8,10,12,13, 16,17,23,27, 30,108,111, 115,118,119, 121,130,133, 134	ECCZCT103JC	Resistor 10K	
R9,14,107,109, 110,124	ECCZCT105JC	Resistor 1M	
R11	ECCZCT752JC	Resistor 7.5K	
R19	ECCZCT221JC	Resistor 220	
R20,21,26,102, 128	ECCZCT473JC	Resistor 47K	
R22	ECCZCT333JC	Resistor 33K	

Ref. No.	Part No.	Part Name	Remarks
R24,25	ECCLGT000JB	Reed Resistor 0ohm	
R28,29,114	ECCZCT104JC	Resistor 100K	
R101	ECCZCT472JC	Resistor 4.7K	
R104-106	ECCZCT362JC	Resistor 3.6K	
R116	ECCZCT753JC	Resistor 75K	
R117	ECCZCT331JC	Resistor 330	
R120	ECCZCT822JC	Resistor 8.2K	
R123,125	ECCZCT222JC	Resistor 2.2K	
R131	ECCZCT471JC	Resistor 470	
RA1	ECM00-26900	Resistor Array 10Kx8	
RA2,3,4,5	ECM00-26800	Resistor Array 10Kx4	
C1,8,13-15, 101,104-108, 111,114,115, 117-123,125, 128-132, 201- 223,225-229, 231-235	EBIT0-03700	Ceramic Capacitor 0.01u	
C3	EBB00-36600	Aluminium Capacitor 10u 16V	
C4	EBB00-34800	Aluminium Capacitor 47u 16V	
C5,102,103	EBIT0-03800	Ceramic Capacitor 0.1u	

Ref. No.	Part No.	Part Name	Remarks
C6	EBB00-51500	Aluminium Capacitor 10u 25V	
C7	EBIT0-07000	Ceramic Capacitor 2200p 500V	
C9	EBB00-34300	Aluminium Capacitor 100u 16V	
C10	EBB00-07200	Aluminium Capacitor 10u 50V	
C11,12	EBB00-03300	Aluminium Capacitor 47u 25V	
C20	EBJT0-05600	Ceramic Capacitor 0.01u	
C110,116,124, 126	EBIT0-03400	Ceramic Capacitor 100p	
C112,113	EBIT0-07100	Ceramic Capacitor 15p	
C127	EBJZ0-00300	Ceramic Capacitor 1000p	
VR1	ECA00-19400	Variable Resistor 500ohm	
CN1	EEB01-15200	Connector 5332-34GS1	
CN2	EEB00-15100	Connector 5332-30GS1	
CN3	EEA01-09400	Connector 5268-04A	
CN4	EEB00-72100	Connector 5268-03A	
CN5	EEB01-15300	Connector 5268-13A	
CN6,9	EEB00-72000	Connector 5268-02A	
CN7	EEA01-09500	Connector 5268-05A	
CN8	EEB01-13200	Connector 5268-10A	
X1	EKH00-12900	X tal FAR-4MHZ	

150-



-52-

RECOMMENDED SPARE PARTS LIST

SLM-804 RECOMMENDED SPARE PARTS LIST 1/2

Ref. No.	Part No.	Part Name	Q'ty 100 Units	MTBF (x10 ⁴ H)	Remarks
1-3	JRM30-23101	Rear Cover Spring	3		
2-1- 3	JRMBK-22801	Heat Roller BK (2)	3		US
	JRMBK-22802	Heat Roller BK (2)	3		EU
2-1- 8	JRM45-21301	Press Roller	3		
2-1-27	JRMBK-22901	Charger Connector (A) BK	3		
2-3- 8	JRM10-20601	Clutch Hub	2		
2-3-12	JRM45-24301	Manual Insert Belt	1		
2-5-10	JRM35-25001	Paper Feed Ratchet	1		
2-5-11	JRM30-20701	Paper Feed Cluth Spring	3		
2-5-12	JRM35-24501	Paper Feed Timing Pulley	1		
2-6-16	JRM45-20601	Drum Timing Belt	1		
2-6-22	JRM45-21501	Paper Feed Timing Belt	1		
2-7- 3	EJG00-20700	Fuse	10	333.33	US
	EJG00-06900	Mini Fuse	10	333.33	EU
2-7- 8	JRPBK-00202	Laser Beam Printer Power Supply Pack	3	8.15	US
	JRPBK-00204	Laser Beam Printer Power Supply Pack	3	8.15	EU
2-7-14	JRMBK-21301	Solenoid BK	1		
2-7-17	JRPBK-00502	High Voltage Power Supply Pack	3		
3-1- 3	JRM45-31101	Ozone Filter (2)	2		
3-1- 7	JRM45-31001	Ozone Filter (1)	2		
3-1-19	JRM30-20401	Opening Hook Spring	3		
3-2-33	JRMBK-22902	Charger Connector (B) BK	3		
3-2-43	JRPBK-00501	High Voltage Power Supply Pack	3	148.15	

SLM-804 RECOMMENDED SPARE PARTS LIST 2/2

[illegible]

