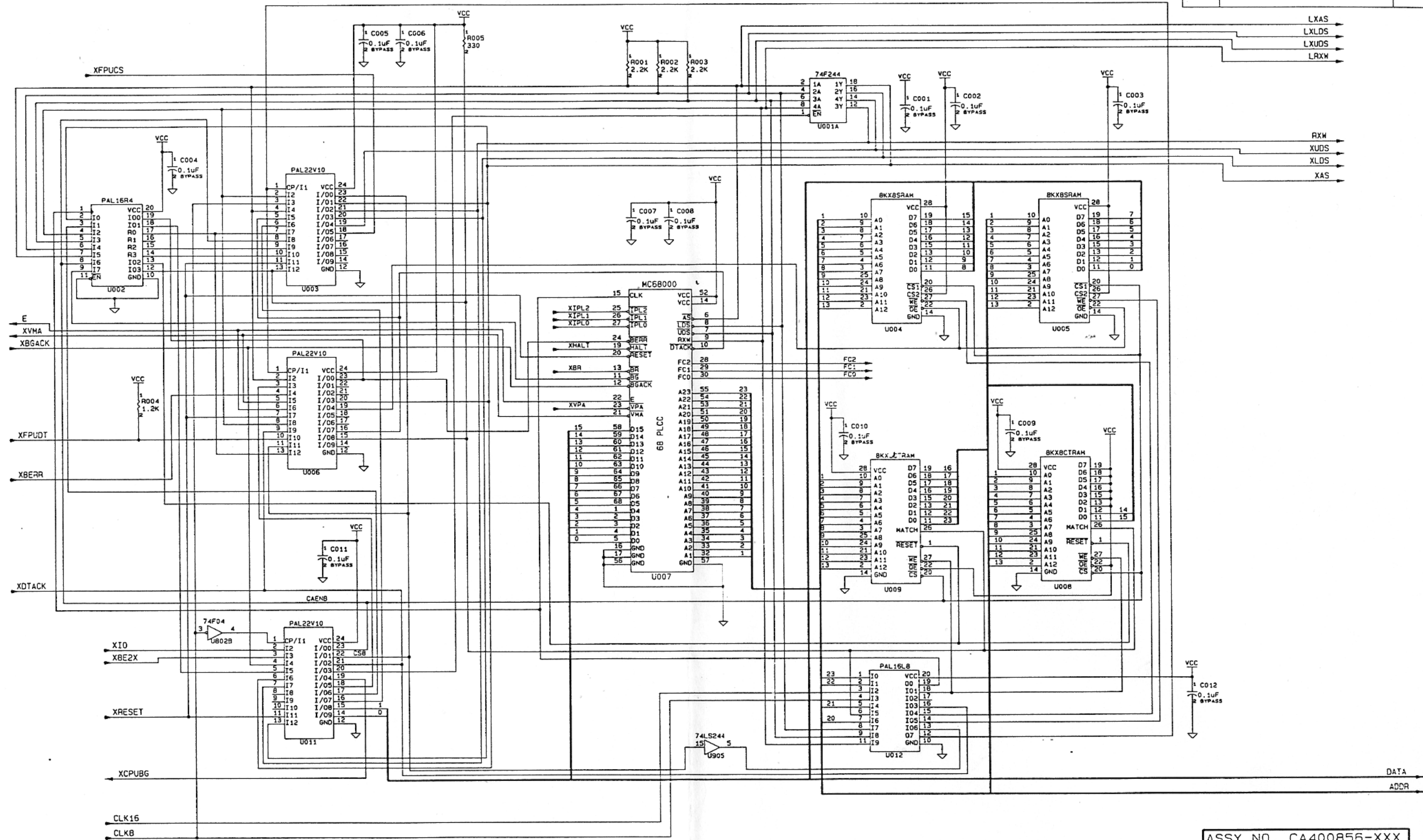


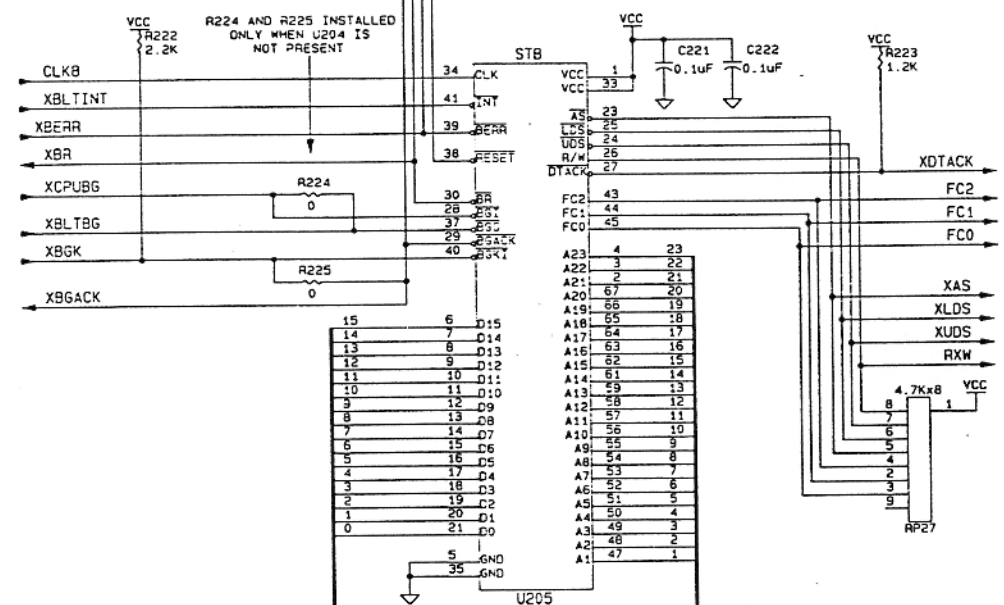
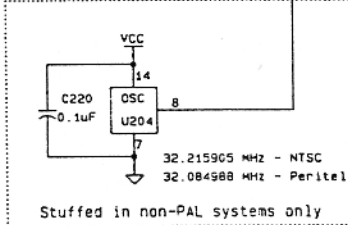
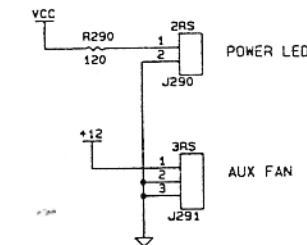
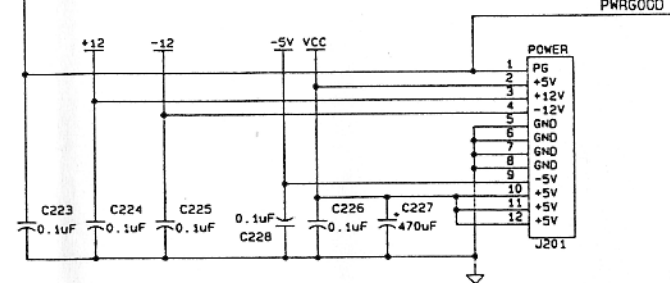
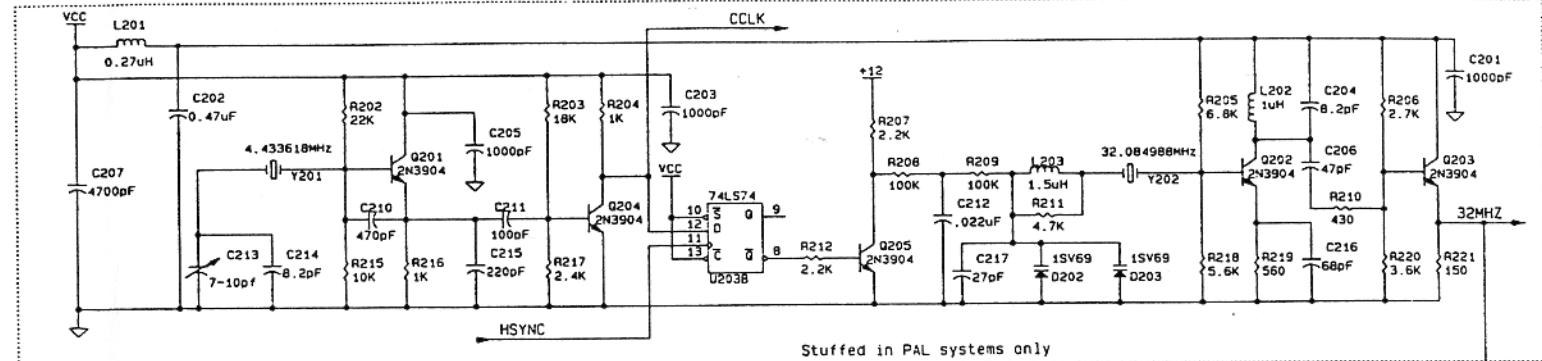
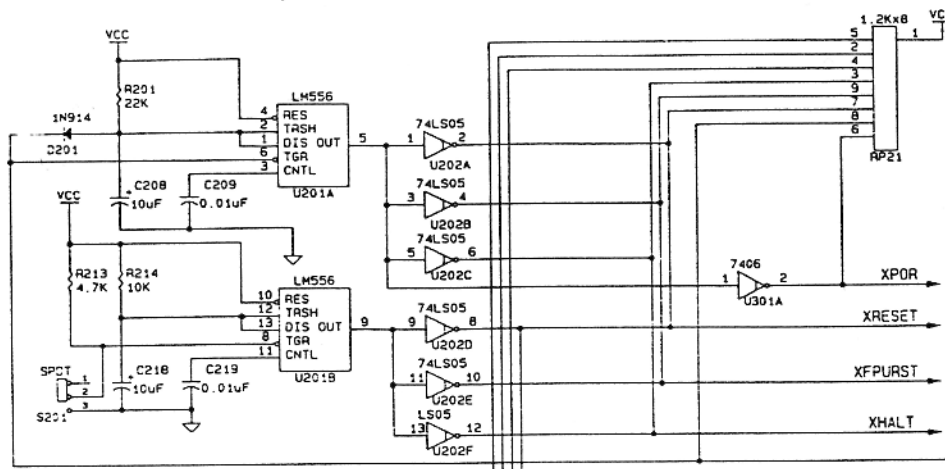
REV	DESCRIPTION	APPROV	DATE
A	UPDATE PER ECO 1247		
B	UPDATE PER ECO'S 1224, 1254, & 1256	TJJ	3-1-91
C	UPDATE PER ECO 1410	CY	2/17/92



ASSY NO. CA400856-XXX

FAB NO. C301564-001

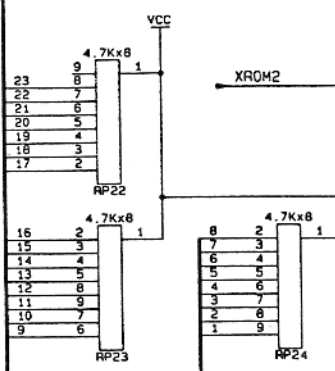
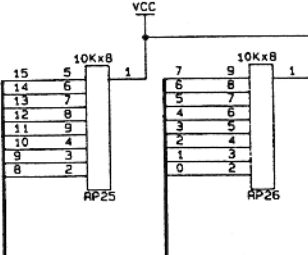
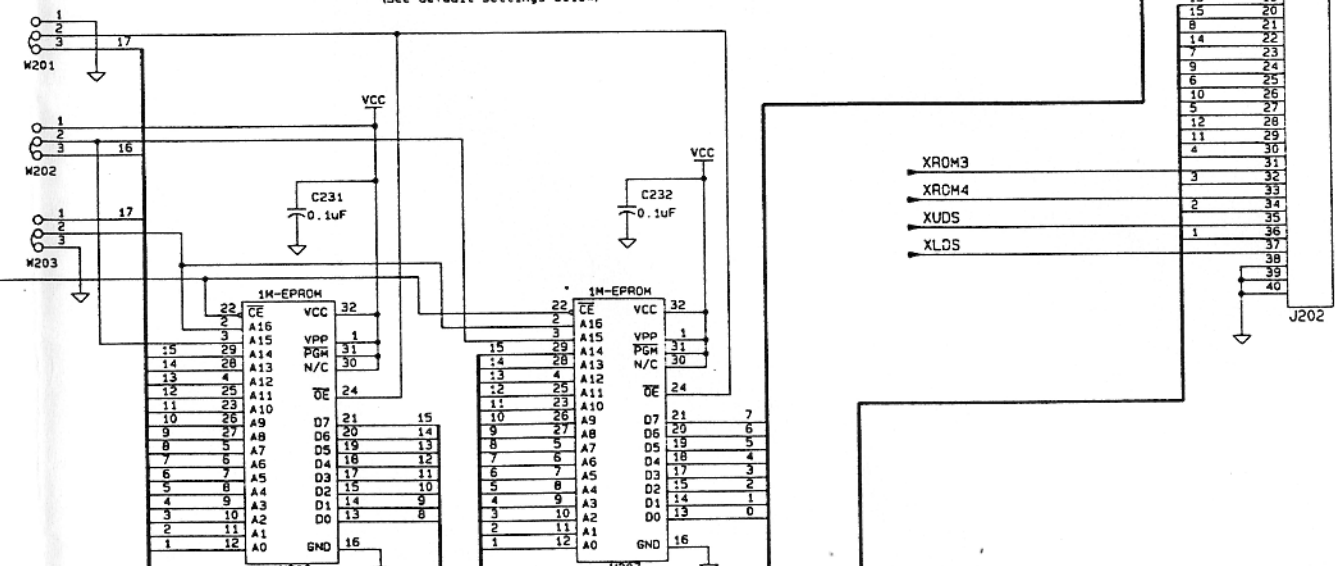
ATARI CORPORATION 1196 BORREGAS, SUNNYVALE, CA 94086			
MEGA STE			
SIZE	CODE	NUMBER: C301565-001	REV
D		ENGINEER: GREG MCKLER	C
DATE: FEB. 18, 1992		SHEET 1 OF 11	

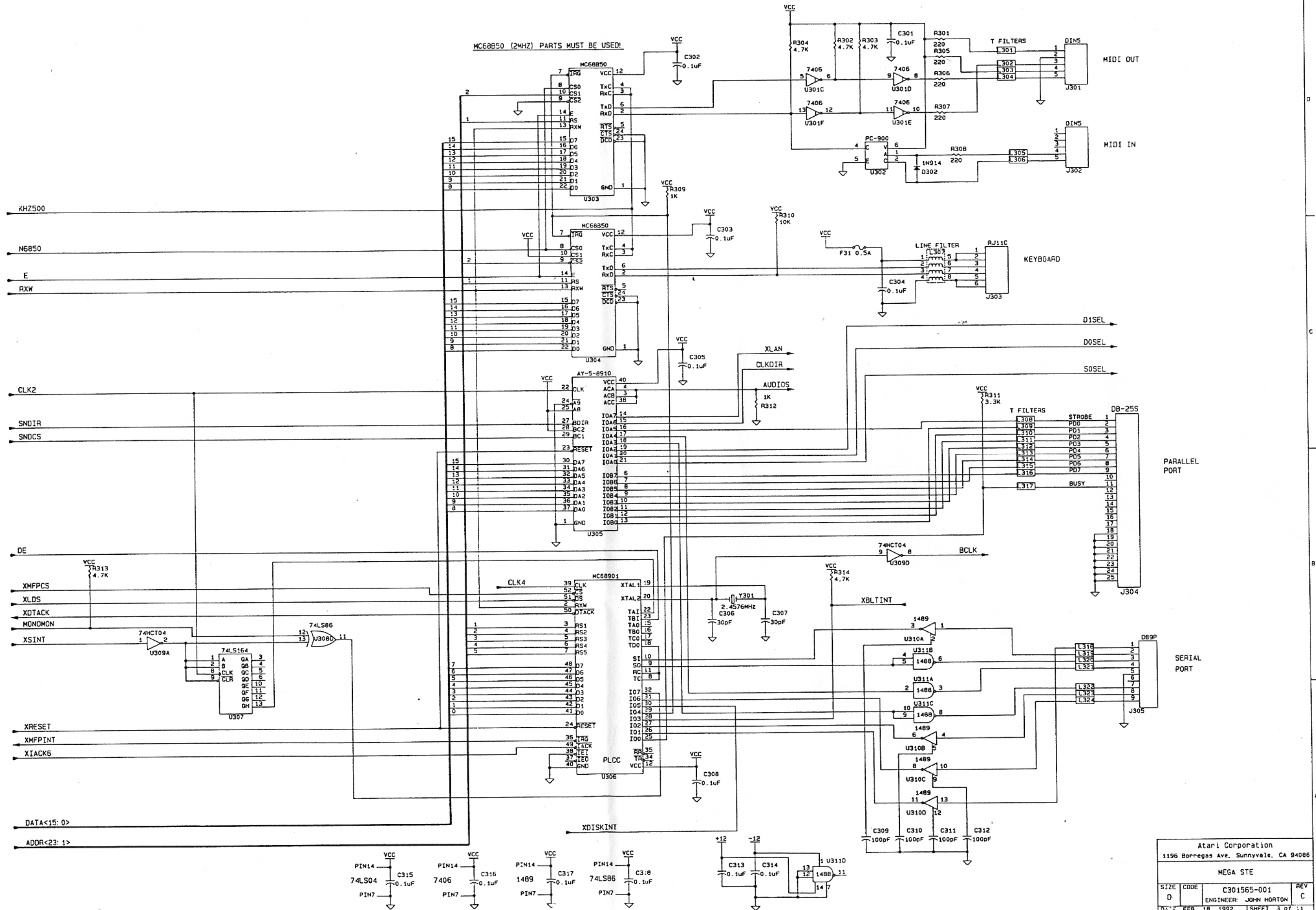


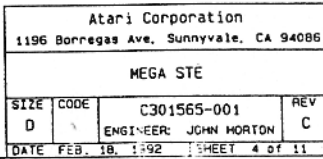
# ROM jumper settings

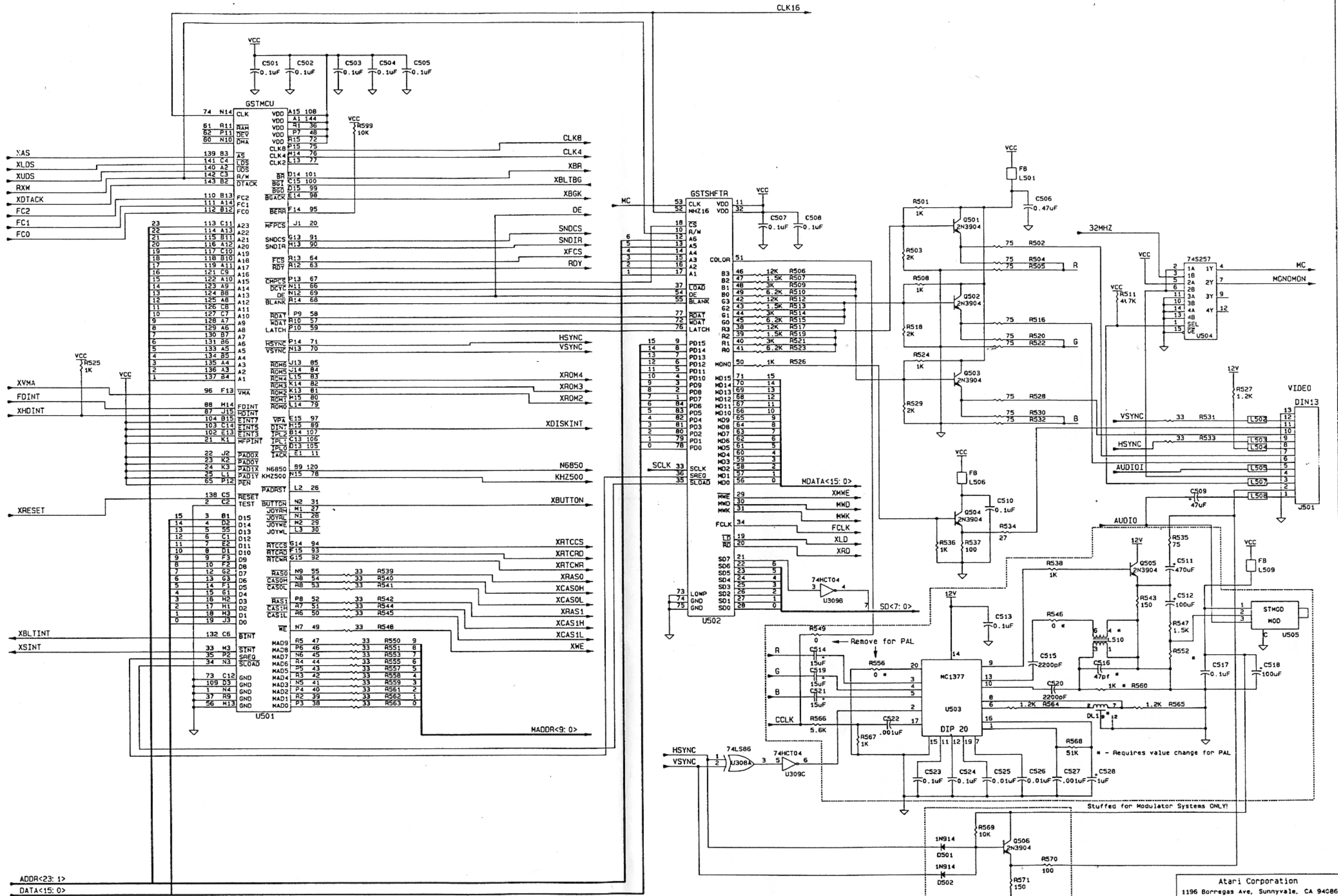
Part Type	W201	W202	W203
27256	Don't Care	1 and 2	N/C
27512	2 and 3	2 and 3	N/C
571001/27C1000/531000	2 and 3	2 and 3	2 and 3
27010/571000/27C1001	1 and 2	2 and 3	1 and 2

Note: Jumpers are preset for 1M Roms  
(See default settings below)



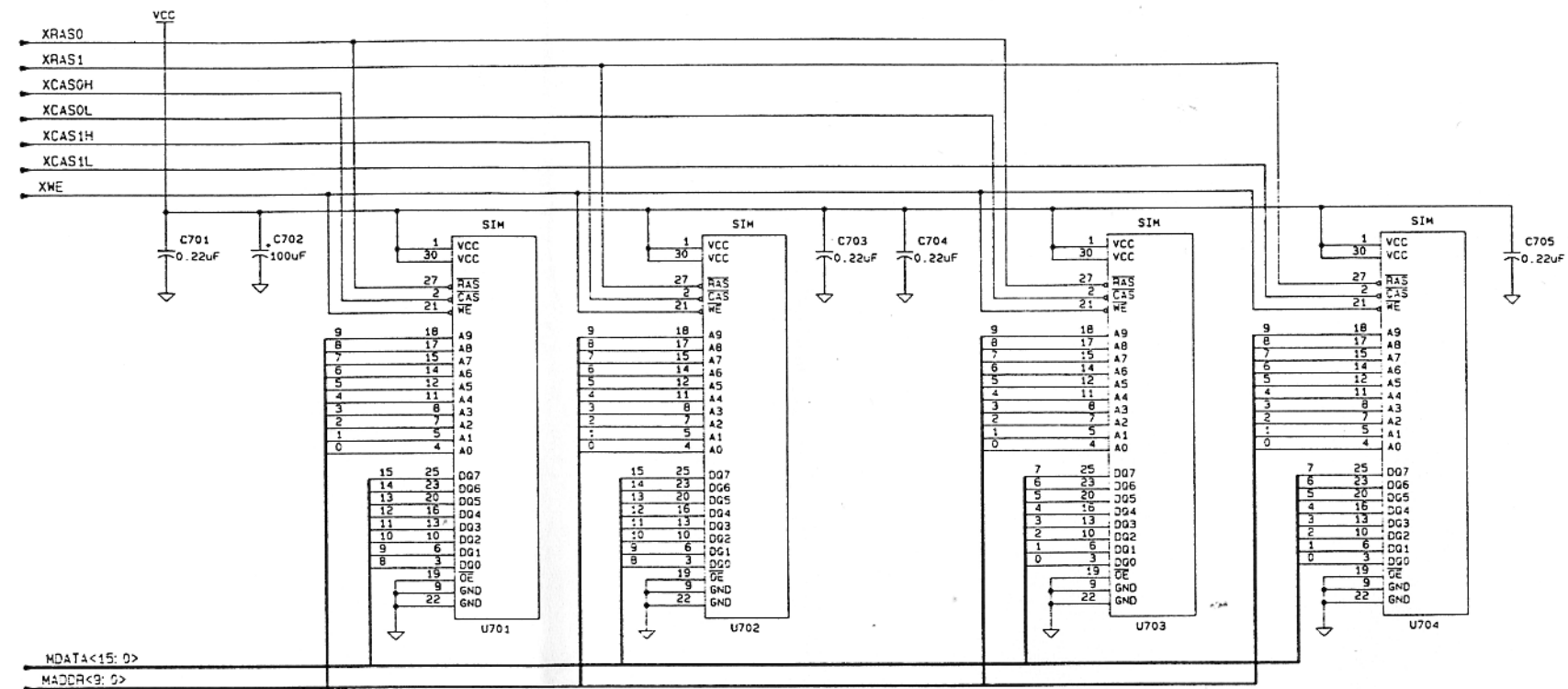




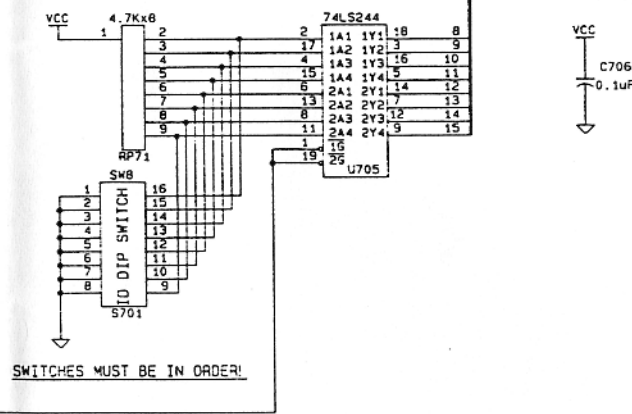


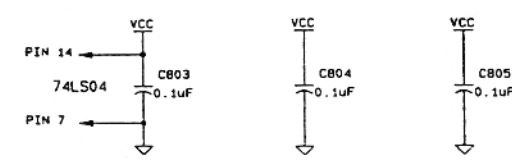
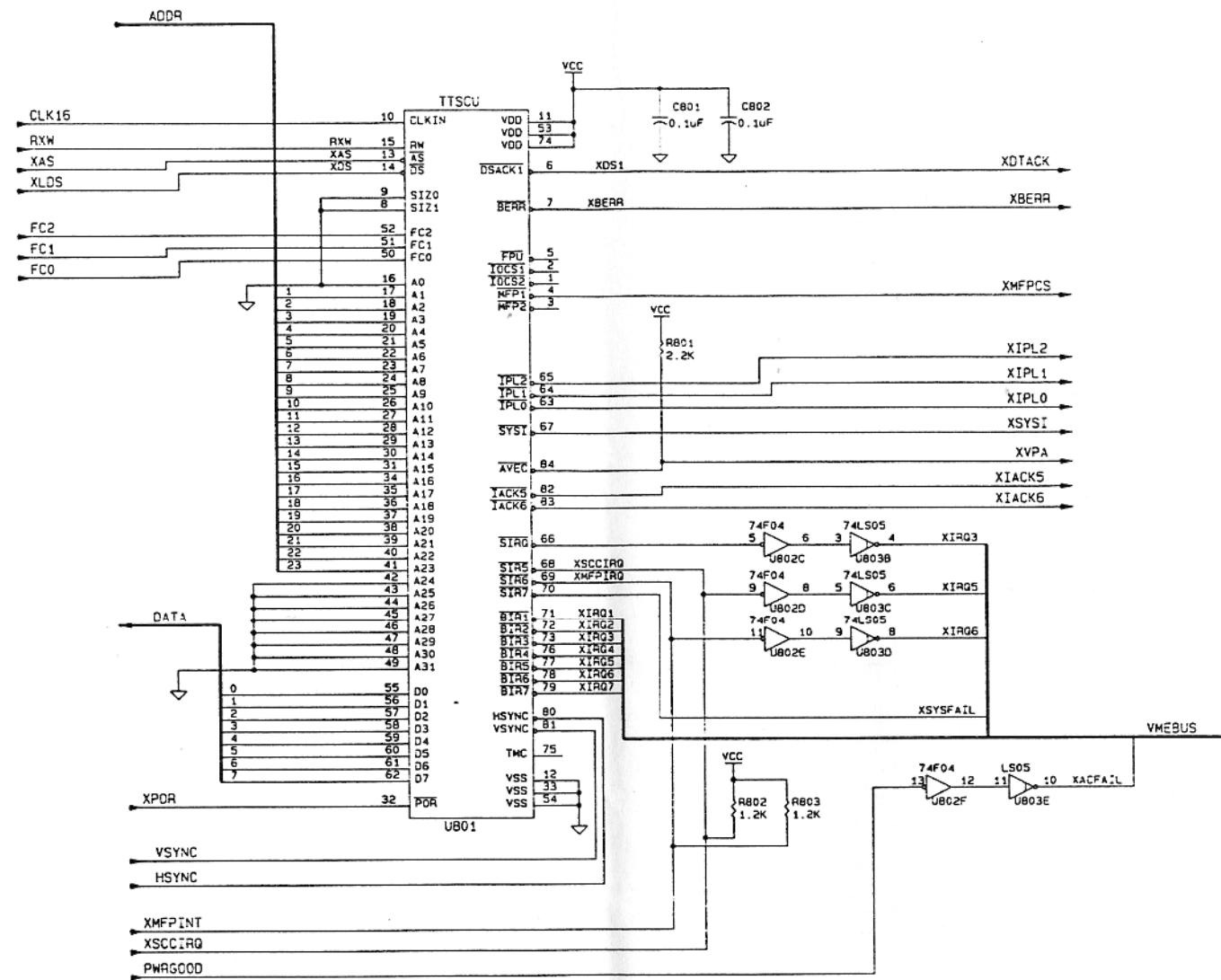






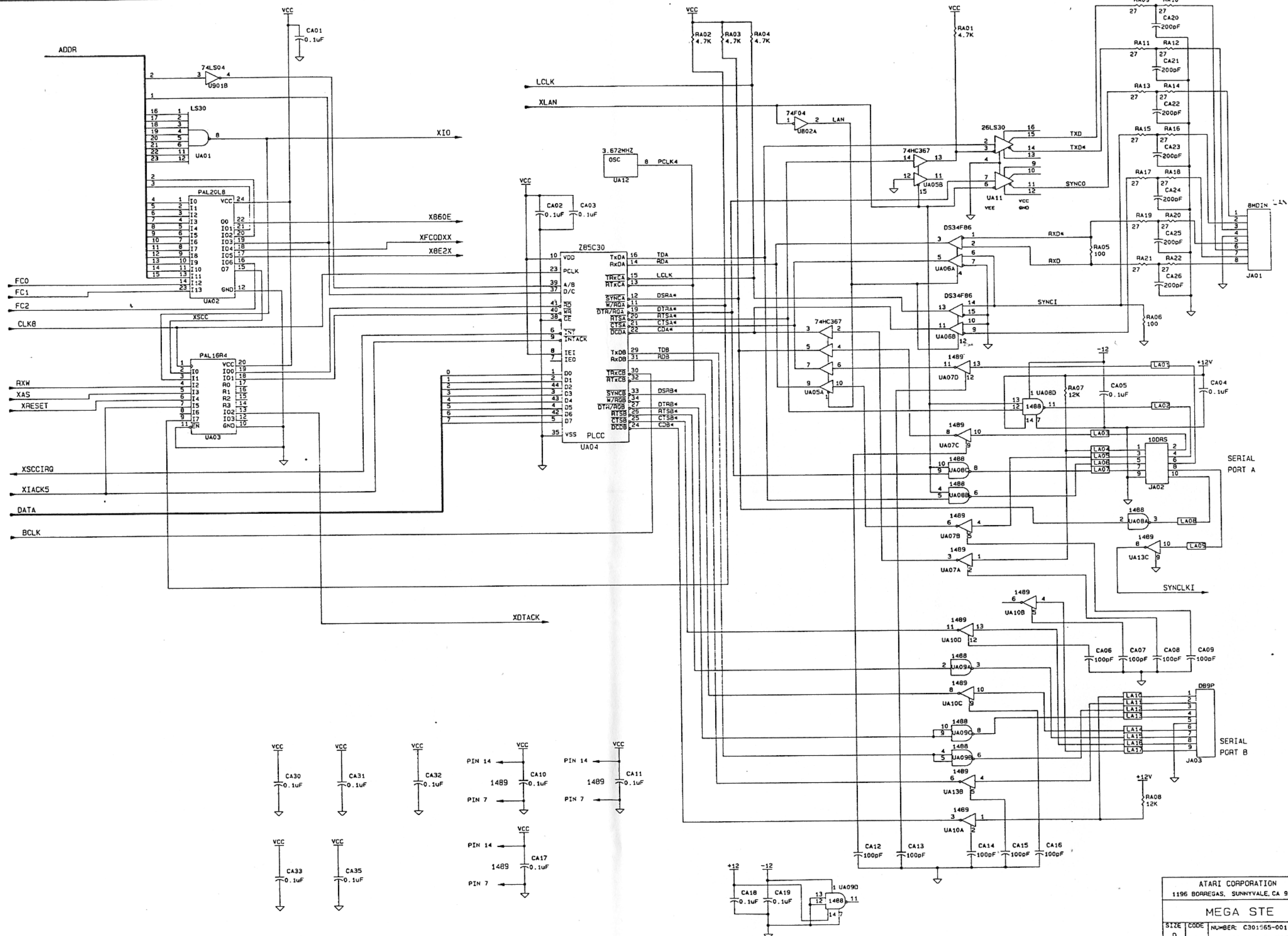
DATA<15:0>











UB01 NEED NOT BE INSTALLED IF UB02 IS NOT PRESENT

